

Optimizing the greenfield Beta-beam

Sanjib Kumar Agarwalla,^{ab} Sandhya Choubey,^a Amitava Raychaudhuri^{ab} and Walter Winter^c

^aHarish-Chandra Research Institute,
Chhatnag Road, Jhansi, Allahabad 211019, India

^bDepartment of Physics, University of Calcutta,
92 Acharya Prafulla Chandra Road, Kolkata 700009, India

^cInstitut für Theoretische Physik und Astrophysik, Universität Würzburg,
Am Hubland, D-97074 Würzburg, Germany

E-mail: sanjib@hri.res.in, sandhya@hri.res.in, raychaud@hri.res.in,
winter@physik.uni-wuerzburg.de

ABSTRACT: We perform a comprehensive and detailed comparison of the physics reach of Beta-beam neutrino experiments between two pairs of plausible source ions, (^8B , ^8Li) and (^{18}Ne , ^6He). We study the optimal choices for the baseline, boost factor, and luminosity. We take a 50 kton iron calorimeter, a la ICAL@INO, as the far detector. We follow two complementary approaches for our study:

- (i) Fixing the number of useful ion decays and boost factor of the beam, and optimizing for the sensitivity reach between the two pairs of ions as a function of the baseline.
- (ii) Matching the shape of the spectrum between the two pairs of ions, and studying the requirements for baseline, boost factor, and luminosity.

We find that for each pair of ions there are two baselines with very good sensitivity reaches: a short baseline with $L [\text{km}]/\gamma \simeq 2.6$ ($^8\text{B}+^8\text{Li}$) and $L [\text{km}]/\gamma \simeq 0.8$ ($^{18}\text{Ne}+^6\text{He}$), and a long “magic” baseline. For $\gamma \sim 500$, one would optimally use ^{18}Ne and ^6He at the short baseline for CP violation, ^8B and ^8Li at the magic baseline for the mass hierarchy, and either ^{18}Ne and ^6He at the short baseline or ^8B and ^8Li at the magic baseline for the $\sin^2 2\theta_{13}$ discovery.

KEYWORDS: Neutrino Physics, Standard Model.

Contents

1. Introduction	1
2. Simulation of the beta-beam experiment	5
2.1 The flux	5
2.2 The detector	8
2.3 Neutrino propagation and simulation details	9
3. Optimizing the baseline	10
3.1 The θ_{13} sensitivity/discovery reach	11
3.2 The $\text{sgn}(\Delta m_{31}^2)$ sensitivity reach	14
3.3 The CP sensitivity reach	15
3.4 Comparison with a megaton water detector set-up	16
4. Optimizing the baseline and gamma	17
4.1 The θ_{13} sensitivity	18
4.2 The $\text{sgn}(\Delta m_{31}^2)$ sensitivity reach	21
4.3 The CP sensitivity reach	21
5. The impact of luminosity	24
5.1 The θ_{13} sensitivity	24
5.2 The $\text{sgn}(\Delta m_{31}^2)$ sensitivity reach	26
5.3 The CP sensitivity reach	27
5.4 Comparison with a neutrino factory	29
6. Summary and conclusions	29

1. Introduction

Spectacular results from a series of neutrino oscillation experiments over the last four decades [1–7] have paved the way for the “golden” age of neutrino physics. Determining the hitherto unknown mixing angle θ_{13} , the CP phase δ_{CP} , and the sign of Δm_{31}^2 , i.e., the neutrino mass hierarchy,¹ have emerged as the next frontier in this field. All these three quantities can be probed by experimentally measuring the so-called “golden” channel [8]

¹Though we call this the neutrino mass *hierarchy*, what we mean is basically the *ordering* of the neutrino mass states. Therefore, our discussions are valid for both hierarchical as well as quasi-degenerate mass spectra. We define $\Delta m_{ij}^2 = m_i^2 - m_j^2$ and refer to $\text{sgn}(\Delta m_{31}^2)$ as the neutrino mass hierarchy – $\text{sgn}(\Delta m_{31}^2) > 0$ is called “normal hierarchy”(NH) while $\text{sgn}(\Delta m_{31}^2) < 0$ is called “inverted hierarchy”(IH).

oscillation probability $P_{e\mu}$ (or its T-conjugate channel $P_{\mu e}$). A series of ambitious projects are under discussion which plan to use this oscillation channel. The on-going and near future experiments include the MINOS experiment in the US [6], and the CNGS experiments ICARUS [9] and OPERA [10] in Europe. Next experiments in line will be T2K in Japan [11] and NO ν A in US [12]. All these experiments will use muon neutrino beams from conventional accelerator sources in order to observe $P_{\mu e}$. Collectively and in combination with short-baseline reactor experiments, such as Double Chooz [13], these experiments are expected to improve the bound on θ_{13} to about $\sin^2 2\theta_{13} < 0.01$ (90% CL) [14]. The mass hierarchy and CP violation, though in principle accessible using the combined data from the T2K and NO ν A experiments, can be determined only for values of $\sin^2 2\theta_{13}$ (true) close to the current bound and for some fraction of the possible values of the CP phase δ_{CP} (true).² The sensitivity of these experiments is mainly restricted by statistics, while for larger luminosity set-ups, the intrinsic ν_e background poses a natural limitation for experiments sensitive to ν_μ oscillations into ν_e . Therefore, if Nature has not been very kind we will need larger experiments to complete our understanding of the neutrinos, possibly using an alternate technology.

In order to access small values of $\sin^2 2\theta_{13}$, there are several requirements: One needs to have low backgrounds, more statistics, and reduced systematical uncertainties. As far as the low background requirement is concerned, it is an advantage to use a pure flavor neutrino beam without any intrinsic beam contamination. One such approach has been proposed by Piero Zucchelli [15]: Radioactive nuclides are created by impinging a target by accelerated protons. These unstable nuclides are collected, fully ionized, bunched, accelerated and then stored in a decay ring (see for e.g. [16, 17]). The decay of these highly boosted ions in the straight sections of the decay ring produces the so-called Beta-beam. An alternative approach is the so-called Neutrino Factory (NuFact) [18]. It involves producing, collecting, cooling, accelerating, and circulating muon packets in a storage ring. The decay of accelerated muons (antimuons) in the straight sections of the storage rings produce ν_μ and $\bar{\nu}_e$ ($\bar{\nu}_\mu$ and ν_e) beams. The presence of the $\bar{\nu}_e$ (ν_e) in the beam allows for the observation of the $P_{\bar{e}\bar{\mu}}$ ($P_{e\mu}$) oscillation probability in the far detector. Since both ν_μ (or $\bar{\nu}_\mu$) from the original beam as well as $\bar{\nu}_\mu$ (or ν_μ) from the oscillated $\bar{\nu}_e$ (or ν_e) will be arriving at the detector, it must have the ability to distinguish one from the other. The most accepted candidate is the magnetized iron detector, though there are several proposals with more expensive and elaborate designs and therefore better performance [19]. Statistics can be increased by a higher beam power and the size and efficiency of the detector. Beam-related systematic uncertainties can be reduced to a large extent by working with a two detector set-up, one very close to the beam line and another serving as the far detector. The systematic uncertainties coming from the lack of knowledge of the neutrino-nucleus interaction cross-sections are another important source of error. These can be controlled to some degree by the near-far two detector set-up, but they cannot be canceled completely [20]. Beam-related backgrounds are extremely small for the NuFact

²We distinguish between the “true” values of the oscillation parameters, which are the values chosen by Nature, and their fitted values. Throughout this paper we denote the true value of a parameter by putting “(true)” after the symbol for the parameter.

and Beta-beam experiments because they either use leptonic decays (NuFact) or a flavor-pure beam (Beta-beam). The detector backgrounds coming mainly from neutral current interactions and mis-identification of particles, can be reduced by imposing intelligent cuts. The atmospheric neutrino backgrounds, which can be important for Beta-beams at lower energies, can be suppressed using timing and directional information.

The performance and physics reach of these expensive and ambitious experiments have been the subject of much discussion for the past few years [21]. There has been a plethora of papers on this issue,³ most of which have addressed the problem of “parameter degeneracies”. Even if both neutrinos and antineutrinos are used, there are three types of discrete degeneracies in the golden channel:

1. the $(\theta_{13}, \delta_{CP})$ intrinsic degeneracy [23],
2. the $(\text{sgn}(\Delta m_{31}^2), \delta_{CP})$ degeneracy [24],
3. the $(\theta_{23}, \pi/2 - \theta_{23})$ degeneracy [25].

Together they can result in up to eight-fold degenerate solutions [26], severely deteriorating the sensitivity of the experiment. The variety of suggestions to solve this problem includes combining data from several experiments observing the golden channel, but with different baselines L and neutrino energies E [23, 27, 28], combining data from accelerator experiments observing different oscillation channels [29–31], combining the golden channel data with those from atmospheric neutrino [32, 33] or reactor antineutrino experiments [34]. A particularly attractive way of completely resolving at least two of the three degeneracies is to perform the experiment at the “magic baseline” [35–37]. This magic baseline reflects the characteristic oscillation wavelength corresponding to Earth matter. One can show that at this baseline, for reasonably small values of θ_{13} , the δ_{CP} -dependent terms vanish. The δ_{CP} -dependence is therefore reduced and one can eliminate the $(\theta_{13}, \delta_{CP})$ and $(\text{sgn}(\Delta m_{31}^2), \delta_{CP})$ degeneracies, resulting in tremendous sensitivity to θ_{13} and $\text{sgn}(\Delta m_{31}^2)$. The sensitivity reach of a NuFact experiment at the magic baseline can be found in [35, 38]. The idea for a magic baseline Beta-beam experiment with a similar performance for θ_{13} and $\text{sgn}(\Delta m_{31}^2)$ was put forth in refs. [39–41].

The sensitivity reach of an experiment depends crucially on beam, baseline, and detector properties. It is therefore important to ask which beam, baseline and detector set-up would qualify as the *optimal* choice in order to obtain the best $\sin^2 2\theta_{13}$ reaches for the three quantities we have set out to measure, i.e. , θ_{13} , $\text{sgn}(\Delta m_{31}^2)$, and δ_{CP} . For the NuFact, this detailed exercise was performed in ref. [38]. The sensitivity to each of the three parameters mentioned above was studied as a function of the baseline and muon neutrino energy. It was demonstrated that the minimal muon neutrino energy acceptable for the magnetized iron detector was about 20 GeV. The optimal baseline for probing θ_{13} and $\text{sgn}(\Delta m_{31}^2)$ is the magic baseline, whereas best sensitivity to CP violation is expected at $L \sim 3000$ to 5000 km [38].

³A summary of the potential of selected NuFact and Beta-beam set-ups have been compiled by the physics working group of the International Scoping Study for a future Neutrino Factory, Superbeam and Beta-beam, in their report [22].

For Beta-beams, a variety of plausible set-ups have been proposed in the literature [33, 39–53]. The proposal which poses minimal challenge for the Beta-beam design, is the commonly called CERN-MEMPHYS project [33, 42, 43]. It proposes to use the EURISOL ion source to produce the radioactive source ions ^{18}Ne and ^6He , and demands a Lorentz boost factor $\gamma \simeq 100$ for them, which can be produced using the existing accelerator facilities at CERN. The far detector MEMPHYS, a megaton water detector with fiducial mass of 440 kton, will have to be built in the Fréjus tunnel, at a distance of 130 km from CERN. Another possible Beta-beam set-up using water detector but higher boost factors and an intermediate baseline option was put forth in [46, 47] (see also [51]). In these papers authors have used a high γ ^{18}Ne and ^6He Beta-beam option at CERN and 440 kton fiducial volume water detector at GranSasso or Canfranc, which corresponds to $L = 730$ and 650 km respectively. Excellent sensitivity to θ_{13} and CP violation is expected [46, 47] from this proposal. Another high performance set-up proposed in [39–41] would use a high γ Beta-beam and a magnetized iron detector placed at a distance close to the magic baseline. Since high energy neutrinos are mandatory for achieving near-resonant matter effects required for the desired performance of this set-up, one needs to employ an alternative set of source ions, ^8B and ^8Li [54, 55]. The end-point energy of these ions are larger than those of ^{18}Ne and ^6He by factor of about 3.5, and hence optimal neutrino energies can be obtained with a γ between 350 and 650. As one possible option, the Beta-beam could be targeted from CERN towards the India-Based Neutrino Observatory (INO) [56]. The CERN to INO distance corresponds to 7152 km, which is almost magic. Therefore, this experiment yields sensitivity to θ_{13} and $\text{sgn}(\Delta m_{31}^2)$, both of which could be outperformed only by the NuFact experiment at the magic baseline distance. Set-ups with a neutrino beam from CERN to GranSasso or CanFranc [44], from CERN to Boulby mine [53] and from Fermilab [48] ($L \sim 300$ km) have also been proposed, and their sensitivity reach has been explored. Set-up with two sets of source ions with different boost factor for each set but with the same baseline was proposed in [51]. In [45] the authors consider the complementary situation where they take only one set of source ions, ^8B and ^8Li , with $\gamma = 350$ and two different baselines, $L = 2000$ km and 7000 km. Very high gamma Beta-beam options have been studied in refs. [39, 47, 49]. The physics potential of low energy Beta-beam option was probed in [57]. A comparison of the physics reach among different Beta-beam experimental proposals can be found in ref. [50, 58].

In contrast to earlier works, we study the baseline optimization as a function of the ion pair used $^{18}\text{Ne}+^6\text{He}$ or $^8\text{B}+^8\text{Li}$, and we discuss the impact of the luminosity. In addition, we perform a simultaneous optimization of L and γ . All comparisons are performed for the same detector, which is a 50 kton magnetized iron calorimeter. Note that the magnetization of the detector, which is mandatory for the Neutrino Factory, is only used for a reduction of the backgrounds. We study the performance with respect to θ_{13} , $\text{sgn}(\Delta m_{31}^2)$, and CP violation. The paper is organized as follows. We describe the Beta-beam experiment and our analysis procedure in section 2. In section 3, we optimize the baseline L of the experiment for fixed sets of γ 's. In section 4, we then perform a simultaneous optimization over L and γ , and we discuss the requirements for a similar beam spectrum. In section 5, we then show the impact of the Beta-beam luminosity, and determine the best combination of L , γ , and

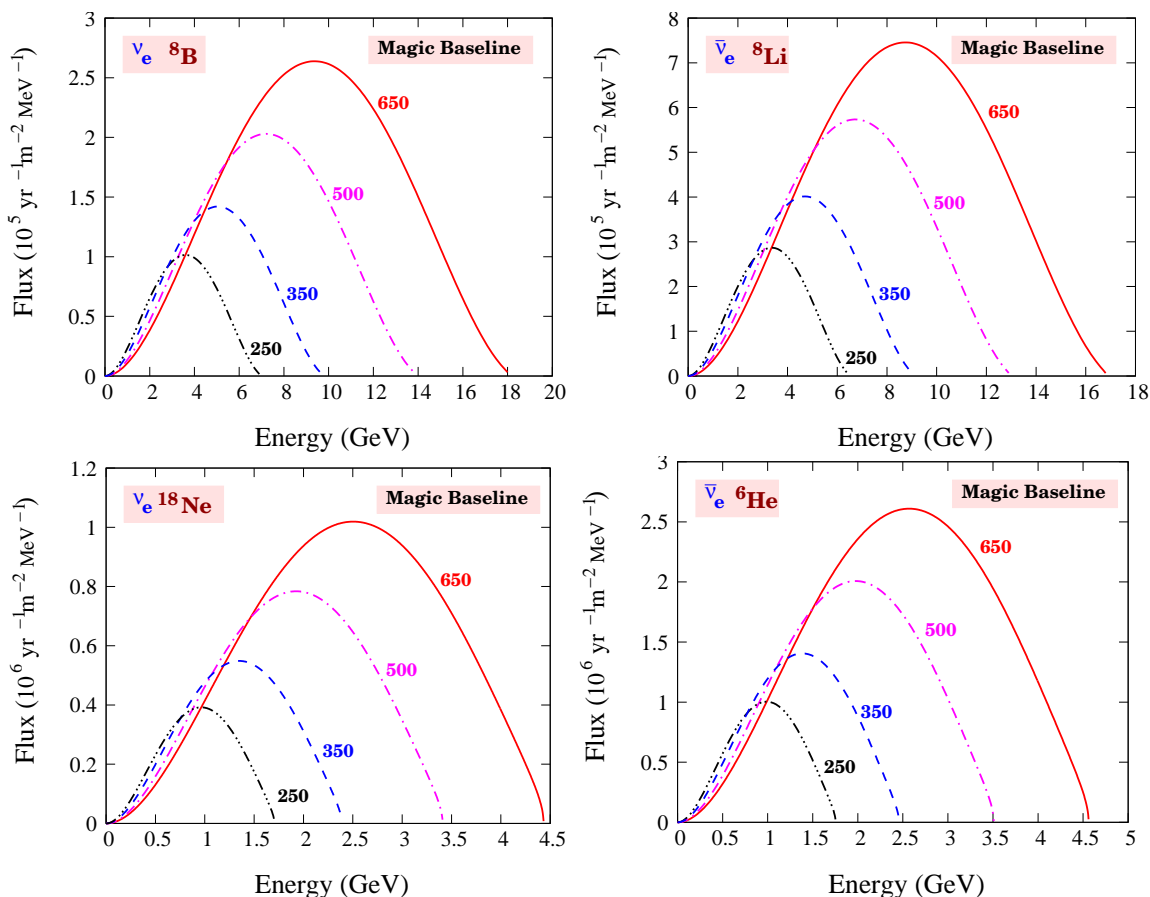


Figure 1: The unoscillated Beta-beam flux spectrum arriving at a detector placed at the magic baseline. The upper panels are for ${}^8\text{B}$ (left panel) and ${}^8\text{Li}$ (right panel), while the lower panels are for ${}^{18}\text{Ne}$ (left panel) and ${}^6\text{He}$ (right panel).

N_β (the number of useful ion decays per year). Our conclusions can be found in section 6.

2. Simulation of the beta-beam experiment

Here we describe the experimental set-up for our proposed Beta-beam facility. We give the details of the flux and detector set-up we have used in our analysis.

2.1 The flux

A Beta-beam [15] is an intense and highly collimated source of pure ν_e or $\bar{\nu}_e$ flux, produced from the decay of beta unstable radioactive ions. These unstable ions are created by impinging a target with high energy protons. Subsequently, the ions are collected, bunched, accelerated and stored in a decay ring. The standard design of the decay ring comprises of a racetrack shaped tunnel. When the ions decay along the straight sections, they produce a ν_e or $\bar{\nu}_e$ beam.

This neutrino beam would be very suitable for precision experiments because it is mono-flavor and hence beam related backgrounds are almost absent. The neutrino spec-

Ion	τ (s)	E_0 (MeV)	f	Decay fraction	Beam
$^{18}_{10}\text{Ne}$	2.41	3.92	820.37	92.1%	ν_e
^6_2He	1.17	4.02	934.53	100%	$\bar{\nu}_e$
^8_5B	1.11	14.43	600872.07	100%	ν_e
^8_3Li	1.20	13.47	425355.16	100%	$\bar{\nu}_e$

Table 1: Beta decay parameters: lifetime τ , electron total end-point energy E_0 , f -value and decay fraction for various ions [60].

trum depends only on the beta decay total end-point energy E_0 and the Lorentz boost of the radioactive ions γ . The spectral shape can therefore be very well determined. The flux normalization is given directly by N_β , the number of useful ion decays per year in the straight section of the storage ring. The standard numbers taken for the ^{18}Ne and ^6He are 1.1×10^{18} (ν_e) and 2.9×10^{18} ($\bar{\nu}_e$) useful decays per year, respectively [59]. Wherever not explicitly mentioned, these reference numbers of useful ion decays for ν_e and $\bar{\nu}_e$ are chosen. Note, however, that new ideas suggest luminosities higher even by a factor of ten or so, depending on the isotopes used, by using a recirculating ring to improve the performance of the ion source [54, 55]. The total luminosity is given by the product of useful ion decays/year \times running time \times detector mass \times detection efficiency. Throughout the study we will consider five years of neutrino and five years of antineutrino running. Since the reference luminosity might not be reachable for different reasons, or it may be much higher because of a better ion source, larger detector, etc., we will include it as a parameter in this study.

The beam divergence is controlled by the Lorentz boost γ . Hence by increasing γ , we can produce a higher beam collimation and increase the beam intensity along the forward direction $\propto \gamma^2$. However, note that though the intensity can be increased by choosing either a higher N_β or γ , they might produce very different neutrino beams. While increasing N_β merely increases the overall normalization of the flux, increasing γ increases both the total flux as well as the average energy of the beam. This dependence of the beam flux on γ is illustrated in figure 1. Notice that we assume the same γ for both neutrino as well as antineutrino modes.

Another crucial aspect associated with Beta-beams is the choice of the beta unstable ion. The properties that a suitable ion should have include a high production yield, large decay fraction, reasonably long lifetime, and preferably lower Z/A ratio. The most widely discussed ions are ^{18}Ne and ^6He , which would produce a ν_e and $\bar{\nu}_e$ beam respectively. The details of the source ions for Beta-beams are given in table 1. The other pair of ions which have been proposed as an alternative to ^{18}Ne and ^6He , are ^8B and ^8Li [54, 55]. The main difference between $^8\text{B}+^8\text{Li}$ compared to $^{18}\text{Ne}+^6\text{He}$ is the higher end-point energy (see table 1). The factor ~ 3.68 (3.35) difference in end-point energy ensures that for the same peak (anti)neutrino energy, approximately given by γE_0 , the γ required for ^8B (^8Li) will be 3.68 (3.35) times smaller than that needed for ^{18}Ne (^6He). Since we assume the same γ for both ions within each pair, we use the average difference in the total end-point energy $(3.35 + 3.68)/2 \simeq 3.5$ to estimate the effects of γ . The isotope dependence can be also seen

in figure 1. The figure shows that the peak energy is approximately given by γE_0 .

Let us discuss now the conditions to obtain a similar spectrum (including normalization) when using different isotope pairs at the same baseline. The purpose of this exercise is to derive the conditions under which we produce matching neutrino energies and fluxes, and therefore deal with the same physics (including neutrino energies, statistics, and, especially, matter effects). If we neglect effects of the endpoint in the beta beam spectrum (i.e., $E_0 \gg m_e$), we know from the beta beam flux formula that the peak energy of the spectrum is approximately given by γE_0 , and the total flux is proportional to $N_\beta \gamma^2$. In order to obtain a spectrum with the *same peak energy and normalization* for two different isotopes with very different endpoint energies (such as ^8B and ^{18}Ne), we therefore have the following conditions (modulo endpoint effects):

$$\frac{N_\beta^{(1)}}{N_\beta^{(2)}} \simeq \left(\frac{E_0^{(1)}}{E_0^{(2)}} \right)^2, \quad \frac{\gamma^{(1)}}{\gamma^{(2)}} \simeq \frac{E_0^{(2)}}{E_0^{(1)}} \quad (2.1)$$

From these matching conditions, one obtains the ratio of $N_\beta^{(1)}/N_\beta^{(2)}$ and $\gamma^{(1)}/\gamma^{(2)}$ needed for the source ions. Therefore, using an isotope with a higher endpoint energy allows for a lower γ to obtain the same neutrino energies. However, in order to get the same flux, the useful isotope decays have to be adjusted quadratically. For our pairs of isotopes, we have $E_0^{B+Li} \simeq 3.5 \cdot E_0^{Ne+He}$. Therefore, from eq. (2.1) we obtain the conditions

$$N_\beta^{B+Li} \simeq 12 \cdot N_\beta^{Ne+He}, \quad \gamma^{Ne+He} \simeq 3.5 \cdot \gamma^{B+Li} \quad (2.2)$$

in order to obtain the same neutrino flux spectrum. Note that the number of useful ion decays N_β represents, to first approximation, an *ion source degree of freedom*, whereas the γ is an *accelerator degree of freedom*.⁴ Each can be adjusted with completely different technical challenges. The actual optimization between higher γ versus higher isotope production rates depends on individual cost and machine aspects, and cannot be done at this place [61].

The optimal baseline depends crucially on the choice of source ions and the boost factor. For shorter baselines one is away from the matter resonance, and hence the flux arriving at the detector is proportional to $1/L^2$. If one wants to stay at the oscillation maximum in vacuum, one has $L/E = \text{const.}$, and therefore $L \propto \gamma$. Since the cross sections are proportional to $\sim E \propto \gamma$ for deep inelastic scattering (DIS) processes, one has an overall $1/L^2 \times \gamma \times \gamma^2 = \gamma$ scaling of the event rates in the DIS regime. Close to matter resonance, the flux at the detector hardly falls as a function of L , which means that longer baselines might be preferred. This qualitative discussion of the baseline dependence does not take into account the non-trivial dependence of the oscillation probabilities on the oscillation parameters, and the intrinsic degeneracies. It is the purpose of this work to study this dependence.

From the discussion above we see that one has to optimize for the Beta-beam flux itself by a judicious choice of:

- The types of ions and their end-point energy.

⁴There is, however, a non-negligible effect of N_β on the accelerator by increasing the number of ions per bunch (or the number of bunches).

- Lorentz boost factor, γ .
- Number of useful ion decays per year, N_β .

It is clear that every choice of ion, γ , N_β and L will give a different physics reach for the experiment. The choice of γ and N_β will determine the initial Beta-beam flux for a given choice of the source ions. This is what we would call the “input” of the experiment. What finally determines the physics reach of the experiment is the number of events seen in the detector, and the potential to resolve correlations and degeneracies. We will call this the “output” of the experiment. The aim of course is to maximize the “output”. However, there are practical limitations on stretching the “input” possibilities. Keeping these in mind, we study the comparative sensitivity reach of the greenfield Beta-beam set-ups in two ways:

1. By fixing the input and comparing the output.
2. By fixing the output and comparing the required input.

We will use approach (1) in section 3, where we make a comparison between the sensitivity reach of the experiment using either the ^8B and ^8Li combination or the ^{18}Ne and ^6He combination, as a function of L . Sections 4 and 5 are more in the spirit of approach (2).

2.2 The detector

We are interested in measuring the golden channel probability $P_{e\mu}$. Since we have a ν_e ($\bar{\nu}_e$) flux in the beam, we need a detector which is sensitive to muons (antimuons). The detector should have a suitable energy threshold, depending on the energy spectrum of the Beta-beam. In addition, it should have a good energy resolution and low backgrounds. There are a number of detector technologies that have been considered in the literature. For the low energy Beta-beams, water Čerenkov detectors are the most widely chosen, mainly because of their low energy threshold and large size. This is a very well known and tested detector technology. In addition, the detector can be relatively easily upgraded; typically megaton-sizes [62–64] appear in the literature. However, the backgrounds in this detector are generally larger than in other detector types. For an intermediate γ Beta-beam, a Totally Active Scintillator Detector (TASD) is a possible technology. This is the option chosen and studied by the NO ν A collaboration [12]. The third kind of detector technology, which has been studied extensively and which is currently being used by MINOS, is the magnetized iron calorimeter. A larger version is envisaged to come up soon at the INO facility in India [56]. In this paper it will be referred to as ICAL@INO. For both TASD and magnetized iron detectors the background rejection is typically considered to be better than for water Čerenkov detectors.

In this paper we use, for the sake of simplicity, only one type of detector for both types of ions and all values of γ . We use an ICAL@INO type of detector configuration [56]. We give the details of our detector specifications in table 2. The charge identification efficiency is incorporated since that helps in reducing the neutral current backgrounds. The number

Total Mass	50 kton
Energy threshold	1 GeV
Detection Efficiency (ϵ)	80%
Charge Identification Efficiency (f_{ID})	95%
Detector Energy Resolution function (σ)	0.15E
Bin Size	1 GeV
NC Background Rejection	0.0001
Signal error	2.5%
Background error	5%

Table 2: Detector characteristics for neutrinos/antineutrinos used in the simulations. The bin size is kept fixed, while the number of bins is varied according to the maximum energy.

of (anti)muon events in the detector is given by

$$N_i = T n_n f_{\text{ID}} \epsilon \int_0^{E_{\text{max}}} dE \int_{E_{A_i}^{\text{min}}}^{E_{A_i}^{\text{max}}} dE_A \phi(E) \sigma_{\nu_\mu}(E) R(E, E_A) P_{e\mu}(E), \quad (2.3)$$

where T is the total running time (taken as five years), $\phi(E)$ is the unoscillated flux at the detector, ϵ is the detector efficiency, n_n is the number of target nucleons in the detector, f_{ID} is the charge identification efficiency and $R(E, E_A)$ is the energy resolution function of the detector, for which we assume a Gaussian function. For muon (antimuon) events, σ_{ν_μ} is the neutrino (antineutrino) interaction cross-section. The quantities E and E_A are the true and reconstructed (anti)neutrino energy respectively.

2.3 Neutrino propagation and simulation details

The expression for $P_{e\mu}$ in matter [65–67], up to second order terms in the small quantities θ_{13} and $\alpha \equiv \Delta m_{21}^2 / \Delta m_{31}^2$, is given by [8, 68]

$$\begin{aligned} P_{e\mu} \simeq & \sin^2 \theta_{23} \sin^2 2\theta_{13} \frac{\sin^2[(1 - \hat{A})\Delta]}{(1 - \hat{A})^2} \\ & \pm \alpha \sin 2\theta_{13} \sin 2\theta_{12} \sin 2\theta_{23} \sin \delta_{\text{CP}} \sin(\Delta) \frac{\sin(\hat{A}\Delta)}{\hat{A}} \frac{\sin[(1 - \hat{A})\Delta]}{(1 - \hat{A})} \\ & + \alpha \sin 2\theta_{13} \sin 2\theta_{12} \sin 2\theta_{23} \cos \delta_{\text{CP}} \cos(\Delta) \frac{\sin(\hat{A}\Delta)}{\hat{A}} \frac{\sin[(1 - \hat{A})\Delta]}{(1 - \hat{A})} \\ & + \alpha^2 \cos^2 \theta_{23} \sin^2 2\theta_{12} \frac{\sin^2(\hat{A}\Delta)}{\hat{A}^2}, \end{aligned} \quad (2.4)$$

where

$$\Delta \equiv \frac{\Delta m_{31}^2 L}{4E}, \quad \hat{A} \equiv \frac{A}{\Delta m_{31}^2}, \quad (2.5)$$

and $A = \pm 2\sqrt{2}G_F N_e E$ is the matter potential, given in terms of the electron density N_e and (anti)neutrino energy E ; the plus sign refers to neutrinos while the minus to antineutrinos.

$ \Delta m_{31}^2(\text{true}) = 2.5 \times 10^{-3} \text{ eV}^2$	$\sigma(\Delta m_{31}^2) = 1.5\%$
$ \sin^2 2\theta_{23}(\text{true}) = 1.0$	$\sigma(\sin^2 2\theta_{23}) = 1\%$
$\Delta m_{21}^2(\text{true}) = 8.0 \times 10^{-5} \text{ eV}^2$	$\sigma(\Delta m_{21}^2) = 2\%$
$\sin^2 \theta_{12}(\text{true}) = 0.31$	$\sigma(\sin^2 \theta_{12}) = 6\%$
$\rho(\text{true}) = 1 \text{ (PREM)}$	$\sigma(\rho) = 5\%$

Table 3: Chosen benchmark values of oscillation parameters and their 1σ estimated errors. The last row gives the corresponding values for the Earth matter density.

The second term in eq. (2.4) is CP violating. While we will use this formula to discuss our results in some cases, our simulation is based on the exact probabilities.

Unless stated otherwise, we have generated our simulated data for the benchmark values in the first column of table 3. These values have been chosen in conformity with the status of the oscillation parameters in the light of the current neutrino data [7]. The values of $\sin^2 2\theta_{13}(\text{true})$, $\delta_{\text{CP}}(\text{true})$ and mass hierarchy which are allowed to vary in our study, will be mentioned wherever applicable. For the Earth matter density, we use the PREM profile [69]. We expect to have a better knowledge of all the parameters mentioned in table 3 when the Beta-beam facility comes up. In particular, we assume that the 1σ error on them will be reduced to the values shown in the second column of table 3 [14, 70, 71]. Therefore, we impose “priors” on these quantities, with the corresponding 1σ error. The results presented in section 3 have been generated using the χ^2 technique and numerical code described in [40, 41]. Figures in sections 4 and 5 have been generated using the GLoBES package [72]. For the latter simulations we do not put any priors on $|\Delta m_{31}^2|$ and $\sin^2 2\theta_{13}$ and instead add 10 year prospective disappearance data from T2K [28]. All other details of the χ^2 technique, as well as beam and detector specification, are taken identical in both numerical codes. We have made extensive checks, and the results obtained from both codes match to a reasonably high level of accuracy. This robustness of the results can be regarded as an independent cross-check within our study.

3. Optimizing the baseline

We optimize the Beta-beam experiments separately with respect to the following physics outputs:

1. The θ_{13} measurement reach.
2. The mass hierarchy reach.
3. The CP sensitivity reach.

By “reach” we refer to going to as small $\sin^2 2\theta_{13}$ as possible. We define the performance indicators below, and optimize the Beta-beam experiment with respect to the baseline in this section. Note that we fix the γ as well as the number of useful ion decays to their reference values in this section.

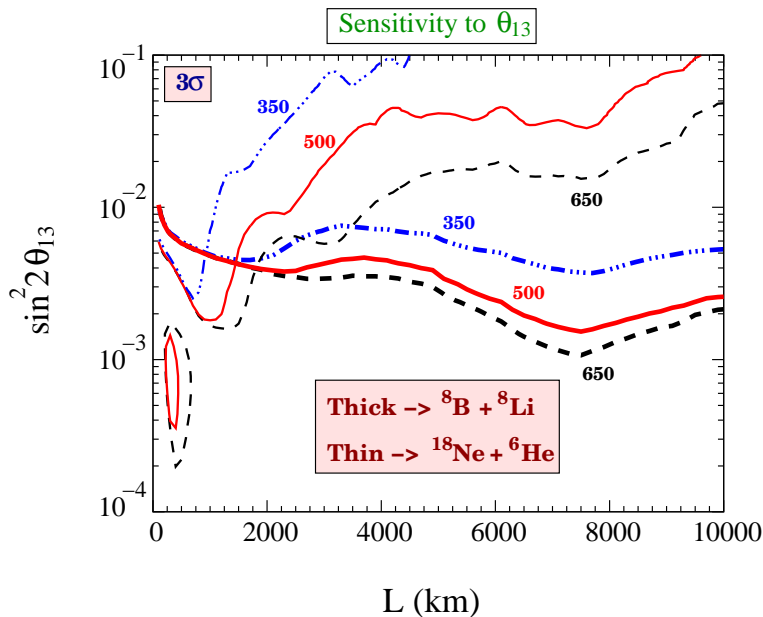


Figure 2: The θ_{13} sensitivity reach as a function of the baseline for three different values of $\gamma = 350$ (blue dot-dashed lines), 500 (red solid lines) and 650 (black dashed lines). The thick lines show the results for ${}^8\text{B}$ and ${}^8\text{Li}$ as source ions, while the thin lines give the corresponding results for ${}^{18}\text{Ne}$ and ${}^6\text{He}$. The region above the curves/within the isolated islands are permitted by the sensitivity criterion.

3.1 The θ_{13} sensitivity/discovery reach

We define two sets of performance indicators for quantifying the sensitivity of the experiment to θ_{13} . We call them the “ θ_{13} sensitivity reach” and the “ θ_{13} discovery reach”. The θ_{13} sensitivity reach is defined as the range of $\sin^2 2\theta_{13}$ which is incompatible with the data generated for $\sin^2 2\theta_{13} (\text{true}) = 0$ at the 3σ CL. This performance indicator corresponds to the new $\sin^2 2\theta_{13}$ limit if the experiment does not see a signal for θ_{13} -driven oscillations.⁵ In that case, we can exclude some allowed values of $\sin^2 2\theta_{13}$, which we call our “ θ_{13} sensitivity reach”. In figure 2, we show the L -dependence of the θ_{13} sensitivity reach of the Beta-beam experiment. The thick lines show the sensitivity for the ${}^8\text{B}$ and ${}^8\text{Li}$ combination, while the thin lines show the corresponding sensitivities for the ${}^{18}\text{Ne}$ and ${}^6\text{He}$ ions. The results are shown for three different values of γ . Since the true value of θ_{13} is assumed to be zero, the data is independent of the true neutrino mass hierarchy and δ_{CP} (true), but the fit depends on $\text{sgn}(\Delta m_{31}^2)$ and δ_{CP} . We have marginalized our results over all oscillation parameters, including mass hierarchy and δ_{CP} . We have also marginalized over the normalization of the Earth matter density.⁶ For the ${}^8\text{B}$ and ${}^8\text{Li}$ combination, the best θ_{13} sensitivity is obtained

⁵Note from eq. (2.4), while the first three terms go to zero when $\theta_{13} \rightarrow 0$, the last term, which depends only on the solar parameters and θ_{23} , remains non-vanishing. Therefore, when the flux is high, i.e. , for large γ and/or enhanced luminosity, we expect a sizable number of events even when $\sin^2 2\theta_{13} (\text{true}) = 0$.

⁶In all results given in this paper, we have done full marginalization over hierarchy, all oscillation parameters and the normalization factor of the Earth matter density distribution.

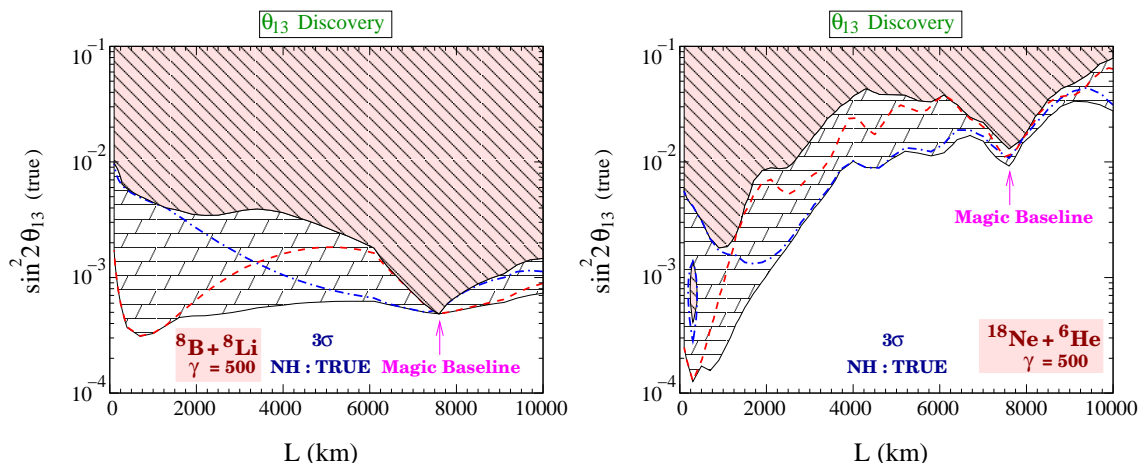


Figure 3: The θ_{13} discovery reach as a function of baseline for ${}^8\text{B}$ and ${}^8\text{Li}$ (left panel) and for ${}^{18}\text{Ne}$ and ${}^6\text{He}$ (right panel). The pink hatched region is where a 3σ discovery is possible for all values of δ_{CP} (true), the white boxed region is where a 3σ discovery is possible for some values of δ_{CP} (true), while the unshaded blank region is where its impossible to get a discovery at 3σ for any value of δ_{CP} (true). The red dashed curve is the discovery reach for δ_{CP} (true) = 0 while the blue dashed-dotted curve is the same for δ_{CP} (true) = π . Here the true hierarchy is assumed to be normal (NH).

at the magic baseline. This baseline is defined by the condition [35]

$$\sin(\hat{A}\Delta) \simeq 0, \tag{3.1}$$

which evaluates to $\sqrt{2}G_F n_e L(n_e) = 2\pi$, or $L \simeq 7000$ to 7500 km. Therefore, the second, third and last terms in eq. (2.4) vanish at this baseline. Since the second and third terms are the CP-dependent terms (with the second term being CP violating), the effect of δ_{CP} is absent. Therefore, the correlation and degeneracies are hardly present, increasing the sensitivity of the experiment.

The impact of the magic baseline is particularly visible for the ${}^8\text{B}$ and ${}^8\text{Li}$ combination because for these ions the fluxes peak at $E \sim 5 - 10$ GeV for $\gamma \sim 350 - 650$. It turns out that for these energies, one obtains near-resonant matter effects, corresponding to $\hat{A} \rightarrow 1$ in eq. (2.4). Therefore, the flux decreases less than $1/L^2$ at these energies, and is still quite substantial at the magic baseline. In fact, for short distances, the $1/L^2$ dependence is canceled by the resonant probability enhancement, as can be read off eq. (2.4). For the ${}^{18}\text{Ne}$ and ${}^6\text{He}$ combination, the fluxes peak around $E \sim 1.0 - 2.5$ GeV for $\gamma \sim 350 - 650$. For such low energies, matter effects are small, even for very long baselines. More importantly, for $E \sim 1.0 - 2.5$ GeV, the oscillatory factor peaks at $L \sim 500 - 1250$ km if one assumes $\Delta m_{31}^2 = 2.5 \times 10^{-3} \text{ eV}^2$. Therefore, for this ion pair, the minimum in the $\sin^2 2\theta_{13}$ sensitivity comes at the baseline where we expect the first oscillation maximum. For $\gamma = 650, 500$ and 350 , the best sensitivity comes at $L = 1250$ km, 890 km and 680 km, respectively. Beyond this baseline, both the flux and the probability fall, resulting in a sharp loss of the $\sin^2 2\theta_{13}$ sensitivity. Note the isolated regions for ${}^{18}\text{Ne}$ and ${}^6\text{He}$ and $\gamma = 500$ and 650 , which are also incompatible with $\sin^2 2\theta_{13}$ (true) = 0. The gap is mainly an artifact of the presence

of clone solutions at these smaller baselines and it might be breached by the combination of a higher flux, better energy resolution, etc., leading to a much better sensitivity.

In figure 3, we show the “discovery reach” for $\sin^2 2\theta_{13}$ (true). This performance indicator is defined as the range of $\sin^2 2\theta_{13}$ (true) values which allow us to rule out $\sin^2 2\theta_{13} = 0$ at the 3σ CL. Since the data are now generated for a non-zero $\sin^2 2\theta_{13}$ (true), there is a δ_{CP} (true) dependence and a true mass hierarchy dependence. The discovery reach for δ_{CP} (true) = 0 is shown by the dashed curve in figure 3, and the discovery reach for δ_{CP} (true) = π is shown by the dashed-dotted curve. For each δ_{CP} (true), one obtains a corresponding such curve. To show the impact of this δ_{CP} (true) dependence of the discovery potential, and to illustrate explicitly the increase in the “risk factor” coming from our lack of knowledge of δ_{CP} (true), we present in figure 3 a band marked by boxes showing the entire range of $\sin^2 2\theta_{13}$ (true) values corresponding to all possible values of δ_{CP} (true). Figure 3 has been drawn for the true normal hierarchy.

The way to interpret this figure is as follows: At a given L , one will discover $\sin^2 2\theta_{13}$ for any δ_{CP} (true) at the upper limit and beyond (the pink hatched region), whereas there is no value of δ_{CP} (true) for which one can discover $\sin^2 2\theta_{13}$ below the lower limit (the unshaded region). Within the band, the fraction of δ_{CP} (true), which allows for a discovery, increases as one approaches the upper limit. Therefore, the upper edge of this band gives the most conservative discovery reach. We will take this as our final discovery reach at a given baseline. The lower edge of the band shows the best possible case. The left panel of figure 3 is computed for ^8B and ^8Li , while the right panel is computed for ^{18}Ne and ^6He . All results in this figure have been computed for $\gamma = 500$. Again we note that, at the magic baseline, our results are CP independent, and the band reduces to a point since the discovery reach is independent of δ_{CP} (true) at this baseline.⁷ For the ^8B and ^8Li combination the best discovery reach comes at $L = 7600$, which is the magic baseline. It is noteworthy though that for these ions the best possible case, given by the lower edge of the band, comes at a lower baseline of $L \simeq 700$ km. For the ^{18}Ne and ^6He pair, since matter effects are low, there is only a local minimum at the magic baseline. In fact, the best performance of the experiment comes at $L = 900$ km, which is approximately the baseline where we have the oscillation maximum for $\gamma = 500$. Again we note the appearance of islands inside the band for the ^{18}Ne and ^6He ions. For regions inside these islands, the discovery of $\sin^2 2\theta_{13}$ is independent of δ_{CP} (true).

We have also computed the $\sin^2 2\theta_{13}$ (true) discovery reach for the true inverted hierarchy. Since the figures look very similar to figure 3, we do not show them explicitly. However, note that in the inverted case, the curves for δ_{CP} (true) = 0 and π interchange their roles. It is not surprising that the inverted hierarchy performs similar to the normal one for the beta beams, since the neutrino and antineutrino event rates are very similar. Our chosen number of useful ion decay is about a factor of three higher for antineutrinos than neutrinos, which is compensated by the higher neutrino cross sections.

⁷For the ^{18}Ne and ^6He combination, there is a small width even at the magic baseline. In this case $\sin^2 2\theta_{13}$ (true) is large, and eq. (2.4) has to be expanded to higher order. The magic baseline condition eq. (3.1) may not hold for higher order terms. This was also noted and pointed out in [41].

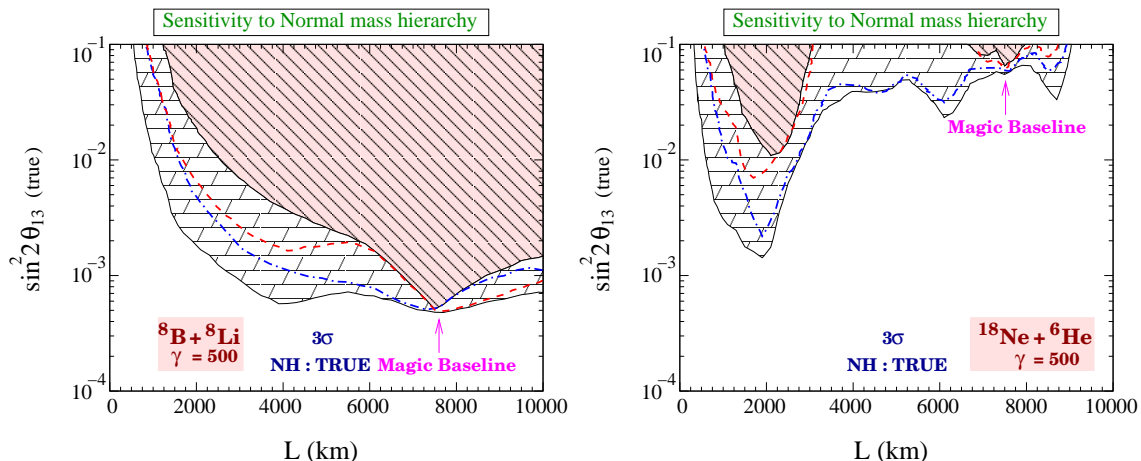


Figure 4: $\sin^2 2\theta_{13}$ (true) reach for determining $\text{sgn}(\Delta m_{31}^2)$ at 3σ CL as a function of the baseline with ${}^8\text{B}$ and ${}^8\text{Li}$ (left panel) and ${}^{18}\text{Ne}$ and ${}^6\text{He}$ (right panel) taken as the source ions. The pink hatched region is where the wrong hierarchy can be ruled out for all values of δ_{CP} (true), the white boxed region is where the hierarchy determination is possible for some values of δ_{CP} (true), while the unshaded blank region is where it's impossible to determine the hierarchy for any value of δ_{CP} (true). The red dashed (blue dashed-dotted) curves show the hierarchy sensitivity for δ_{CP} (true) = 0 (δ_{CP} (true) = π). The true hierarchy is assumed to be normal (NH).

3.2 The $\text{sgn}(\Delta m_{31}^2)$ sensitivity reach

We define the mass hierarchy sensitivity as the range of $\sin^2 2\theta_{13}$ (true) for which the wrong hierarchy can be excluded at the 3σ CL. We show our results as a function of the baseline in figure 4. As before, the left panel is for the ${}^8\text{B}$ and ${}^8\text{Li}$ case, and the right panel for ${}^{18}\text{Ne}$ and ${}^6\text{He}$. In addition, we show the risk with respect to δ_{CP} (true) as a band marked by boxes, where the lower edge corresponds to the best possible reach (obtainable for only some specific δ_{CP} (true)), and the upper edge to the conservative case (valid irrespective of the value of δ_{CP} (true)). That means that the hierarchy can be determined for any $\sin^2 2\theta_{13}$ (true) above the upper end of the band. In all panels, we also show the curves corresponding to δ_{CP} (true) = 0 and δ_{CP} (true) = π , for illustration. For the ${}^8\text{B}$ and ${}^8\text{Li}$ case, we find that the best sensitivity to the mass hierarchy comes at the magic baseline. The reason for this is basically the same as in the previous subsection: The near-resonant matter effects lead to a large number of events, and the resonant behavior is only present for one hierarchy (normal or inverted). It is, therefore, possible to have very large matter dependent oscillations for $L \gtrsim 4000$ km. However, the effect of δ_{CP} (true) could wash away the sensitivity to $\text{sgn}(\Delta m_{31}^2)$. For example, for $L \simeq 4000$ km, we do not obtain a very good sensitivity for even the best case. If one takes into account all possible δ_{CP} (true) values, the sensitivity becomes deteriorated significantly. At the magic baseline, the dependence on δ_{CP} (true) is reduced. Therefore, this baseline provides the best choice to determine the mass hierarchy.

The right panel in figure 4 corresponds to the ${}^{18}\text{Ne}$ and ${}^6\text{He}$ case. The sensitivity to the mass hierarchy is rather poor for the values of γ we have adopted here because of the

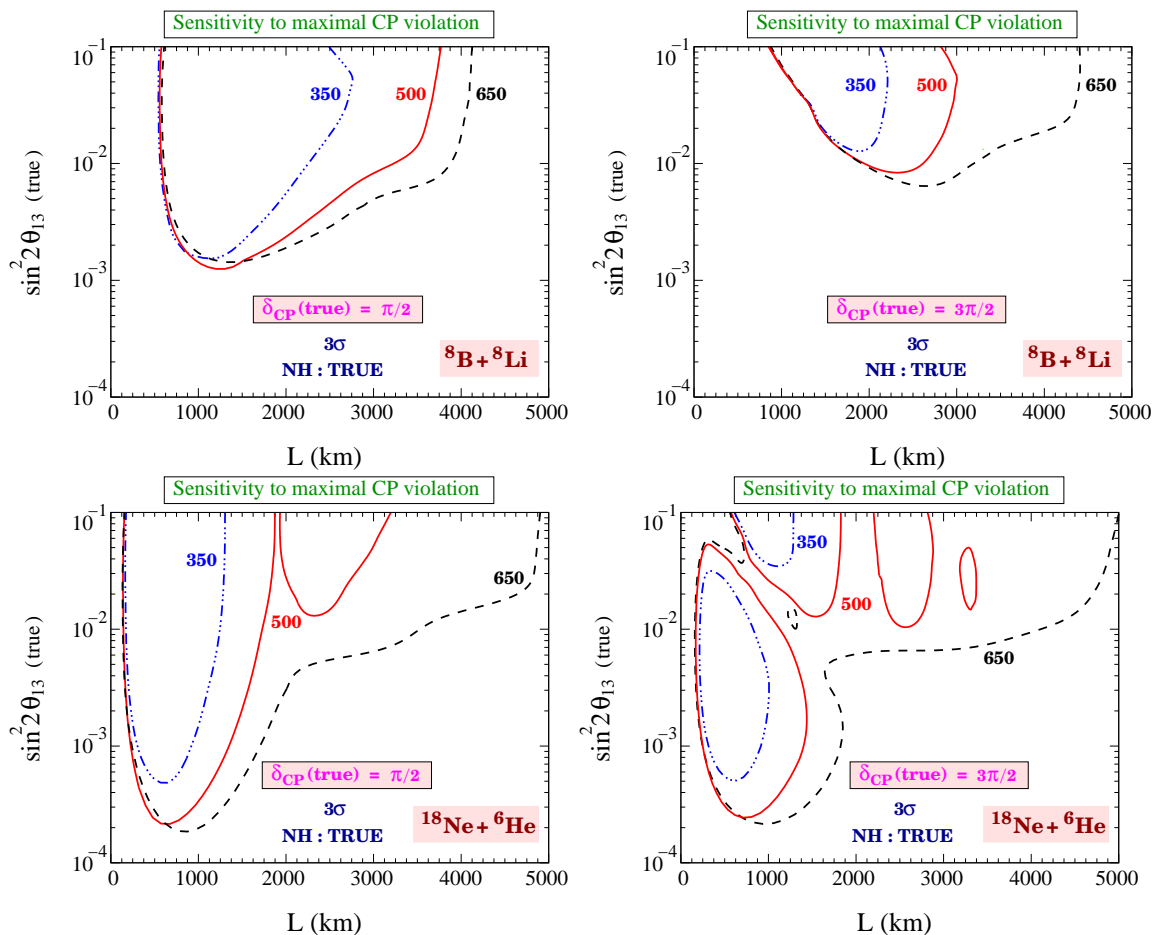


Figure 5: $\sin^2 2\theta_{13}$ (true) reach for sensitivity to maximal CP violation as a function of L , for three different values of γ . The upper panels are for ${}^8\text{B}$ and ${}^8\text{Li}$ taken as the source ions and the lower panels are for ${}^{18}\text{Ne}$ and ${}^6\text{He}$ as the source ions. The left panels are for $\delta_{\text{CP}}(\text{true}) = \pi/2$, and the right panels for $\delta_{\text{CP}}(\text{true}) = 3\pi/2$. In all cases, a true normal hierarchy has been assumed.

low energies off the matter resonance (the energies are about a factor of 3.5 lower than for the ${}^8\text{B}$ and ${}^8\text{Li}$ pair). Since the mass hierarchy determination crucially depends on matter effects, we have very poor sensitivity for this performance indicator, at least for the values of γ considered here. We will see in the next section that this set of ions could start giving comparable sensitivity only when the γ is increased by a factor of three. For $\gamma = 500$, the best sensitivity comes at $L \simeq 2000$ km.

Again, we have tested the true inverted hierarchy case, and we have not found any significant qualitative or quantitative differences.

3.3 The CP sensitivity reach

We next discuss the reach of the experiment to CP violation as a function of L . We define the sensitivity to (maximal) CP violation as the range of $\sin^2 2\theta_{13}$ for which CP conservation (i.e., $\delta_{\text{CP}} = 0$ and π) can be excluded at the 3σ confidence level irrespective of the (fit) hierarchy. The results are shown in figure 5, where we generate the data either

Set-up	$\sin^2 2\theta_{13}$ Sensitivity (3σ)	$\sin^2 2\theta_{13}$ Discovery (3σ)	Mass Ordering (3σ)	Maximal CP violation, (3σ) $\delta_{\text{CP}}(\text{true}) = \pi/2$
<u>Optimal</u> ICAL $\gamma = 500$	1.5×10^{-3} (L=Magic, ${}^8\text{B}+{}^8\text{Li}$)	4.9×10^{-4} (L=Magic, ${}^8\text{B}+{}^8\text{Li}$)	5×10^{-4} (L=Magic, ${}^8\text{B}+{}^8\text{Li}$)	1.8×10^{-4} (L=700 km, ${}^{18}\text{Ne}+{}^6\text{He}$)
<u>Benchmark</u> water Čerenkov $\gamma = 350$ L = 730 km ${}^{18}\text{Ne}+{}^6\text{He}$	5.7×10^{-4}	8×10^{-4}	1.6×10^{-2}	5.2×10^{-5}

Table 4: Comparison of the conservative sensitivity reaches in $\sin^2 2\theta_{13}$ for the different performance indicators. Conservative is defined as the reach in $\sin^2 2\theta_{13}$ irrespective of $\delta_{\text{CP}}(\text{true})$ and true mass hierarchy. For CP violation we give the reach for $\delta_{\text{CP}}(\text{true}) = \pi/2$. The upper row gives the sensitivity reaches for the optimal set-ups identified in this paper, which use ICAL-type magnetized iron detectors. The value of L and the ion source are shown in parentheses. Lower row gives the sensitivity for the benchmark set-up with water Čerenkov detector. The exposures correspond to 50 kton of iron and 500 kton of water with five years of neutrino and antineutrino runs each.

for $\delta_{\text{CP}}(\text{true}) = \pi/2$ (left panels) or $3\pi/2$ (right panels). The upper panels are computed for the ${}^8\text{B}$ and ${}^8\text{Li}$ pair, while the lower panels are for the ${}^{18}\text{Ne}$ and ${}^6\text{He}$ pair. We show results for three choices of γ . Let us focus on $\delta_{\text{CP}}(\text{true}) = \pi/2$ (left panels) first. The best choice for the baseline is around $L = 500 - 1500$ km, depending on the choice of ions and γ . For example, for the ${}^8\text{B}$ and ${}^8\text{Li}$ combination, the optimum is found at around the FNAL-Homestake baseline $L = 1290$ km. However, the absolute performance for ${}^8\text{B}$ and ${}^8\text{Li}$ is worse than for the ${}^{18}\text{Ne}$ and ${}^6\text{He}$ combination. For $3\pi/2$ (right panels), the sensitivity becomes worse in both cases due to the impact of degeneracies. Ignoring the gaps, there is still a substantial CP violation reach for ${}^{18}\text{Ne}$ and ${}^6\text{He}$ for both $\delta_{\text{CP}}(\text{true}) = \pi/2$ and $3\pi/2$. For example, if Double Chooz constrains $\sin^2 2\theta_{13}$ to values smaller than about 0.04, a short baseline $L \simeq 300$ km together with $\gamma \geq 500$ might be sufficient for the CP violation measurement because the gap can be excluded. The optimal baseline for maximum $\sin^2 2\theta_{13}$ reach, on the other hand, ranges between $L \simeq 600$ for $\gamma = 350$ to $L = 1000$ km for $\gamma = 650$. For the inverted hierarchy, we obtain very similar figures to figure 5, but the role of $\delta_{\text{CP}}(\text{true}) = \pi/2$ and $\delta_{\text{CP}}(\text{true}) = 3\pi/2$ is exchanged.

3.4 Comparison with a megaton water detector set-up

In this paper, we have restricted ourselves to magnetized iron calorimeters as the far detector technology. Detector characteristics such as size, efficiency, energy threshold, energy resolution and backgrounds affect crucially the choice of the source ions and their corresponding boosts. Energy threshold is expected to be lower for water Čerenkov detectors,

totally active scintillator detectors, and liquid argon TPC. As an additional complication, the reconstructed energies of the background events can be different. Therefore, the optimization of the Beta-beam depends on the detector technology as well. In this paper, we have restricted ourselves to a single detector option for all cases, in order to outline the optimization in terms of boost factor, baseline, luminosity, and especially the ion pair. A comparison of different detector technologies will follow [74]. Here we compare our results to a water Čerenkov detector set-up for the sake of illustration. We use as a benchmark the set-up from ref. [46], in which ^{18}Ne and ^6He ions with $\gamma = 350$, $L = 730$ km, and a water Čerenkov detector with $4.4 \text{ Mt} \times y$ statistics were used as one option. Such a detector could be placed at the Gran Sasso laboratory in Italy or at Canfranc in Spain. If the source is located at CERN the baselines are 730 km and 650 km, respectively. In order to compare with the results of our optimal set-ups, we have re-computed the sensitivities of this benchmark set-up with GLoBES [72] for the same input assumptions as in this study and a total luminosity corresponding to 500 kton of water with five years of neutrino and antineutrino runs each.⁸ This set-up returns a $\sin^2 2\theta_{13}$ sensitivity of 5.7×10^{-4} , while the θ_{13} discovery reach ranges between 4.8×10^{-5} and 8.0×10^{-4} depending on δ_{CP} (true). For two specific choices of δ_{CP} (true) = 0 and π the discovery reaches are 3.1×10^{-4} and 8.0×10^{-4} respectively. Normal mass hierarchy discovery reach ranges between 2.4×10^{-3} and 1.6×10^{-2} depending on δ_{CP} (true). For δ_{CP} (true) = 0 and π the hierarchy sensitivity reaches are 1.0×10^{-2} and 4.0×10^{-3} respectively. Maximal CP violation can be established if $\sin^2 2\theta_{13}$ (true) $\geq 5.2 \times 10^{-5}$ for δ_{CP} (true) = $\pi/2$ and $\sin^2 2\theta_{13}$ (true) $\geq 5.5 \times 10^{-5}$ for δ_{CP} (true) = $3\pi/2$. All numbers are at the 3σ confidence level, and we have not found any disconnected regions for these performance indicators. For a direct comparison with the optimal set-ups identified in this paper, we present in table 4 the “most conservative” sensitivity reaches in $\sin^2 2\theta_{13}$ (true) for the four types of performance indicators we have defined. “Most Conservative” is defined as the reach after allowing for all possible δ_{CP} (true) and true mass hierarchy. This corresponds to a “no-risk” situation. The upper row gives the sensitivity reaches for our optimized set-ups for the different performance indicators. The set-up concerned is defined within the parentheses. The lower row gives the corresponding reaches for the set-up involving water Čerenkov detector defined above. One can see that the water Čerenkov set-up comprehensively outperforms our optimal set-up in CP violation, while mass hierarchy measurement is clearly done better with ^8B and ^8Li ions at the magic baseline. The θ_{13} measurement is better in water Čerenkov set-up, though our optimal set-up is only slightly worse. Also, it is unclear if the 50 kton iron calorimeter is comparable to the 500 kton water Čerenkov detector (fiducial volume) in terms of cost.

4. Optimizing the baseline and gamma

In this section, we will allow for larger values of γ and show results in the $\gamma - L$ plane,

⁸Especially, the different values of θ_{12} and Δm_{31}^2 compared to ref. [46] do have some impact on the sensitivities. The experiment description is taken from the current GLoBES distribution, updated with the luminosity numbers for this study.

while we still fix the number of useful ion decays to its reference value. In section 3, we have compared the different ion pairs for the same fixed γ . This however, implies that the peak energies, and therefore the physics (matter effects etc.) is different. Here we wish to show the projected sensitivity for the two sets of isotopes when they produce beams with similar peak energies, where we leave both L and γ as free parameters. The motivation is to have similar effect of the oscillations and matter effects for both the sets of ions. The end-point energies of ^{18}Ne and ^6He are about 3.5 times smaller than those of ^8B and ^8Li . Therefore, with γ for ^{18}Ne and ^6He scaled up by a factor of roughly 3, we expect almost the same oscillated spectral shape for the two cases. Hence we show the results for $\gamma < 1000$ for ^8B and ^8Li , and for $\gamma < 3000$ for the ^{18}Ne and ^6He . We stress that we allow for these prohibitively large values of γ for ^{18}Ne and ^6He in order to compare set-ups with same physics output. While they might appear to be unrealistic, they can in principle be achieved by an accelerator as large as the LHC [73]. The Tevatron might also be used to give large boost factors.

4.1 The θ_{13} sensitivity

In order to discuss the θ_{13} performance, we use the $\sin^2 2\theta_{13}$ sensitivity reach in this section. The $\sin^2 2\theta_{13}$ sensitivity represents the *largest* $\sin^2 2\theta_{13}$ which fits a $\sin^2 2\theta_{13}(\text{true}) = 0$. Therefore in this section, we do not take into account any disjoint regions, such as the ones which appeared in figure 2. We reiterate that the $\sin^2 2\theta_{13}$ sensitivity is independent of the true mass hierarchy and $\delta_{\text{CP}}(\text{true})$. We show in figure 6 the 3σ $\sin^2 2\theta_{13}$ sensitivity reach as a function of baseline L and Lorentz factor γ . The curves in this figure represent the 3σ C.L. contours for different values of $\sin^2 2\theta_{13}$. The contours are spaced by 0.2 in $\log_{10}(\sin^2 2\theta_{13})$, and the numbers are shown in the figure for some of them. The diamonds mark the absolute optimum within each plot; the corresponding values are given in the figure caption. The upper row corresponds to ^8B and ^8Li and the lower row to ^{18}Ne and ^6He . The left column shows the systematics limit only, where we have kept all parameters including the mass hierarchy and $\delta_{\text{CP}} = 0$ fixed in the fit. The right column shows the final sensitivity limit after including correlations and degeneracies. From section 2.1, we have learned that a gamma range for ^{18}Ne and ^6He about three times larger than for ^8B and ^8Li gives similar neutrino peak energies, which is illustrated by the right vertical axes in the plots. This feature is reflected in our choice of the γ ranges in figure 6. Note that in both the upper and lower rows of figure 6 we have used the same isotope decay rates, the same running times, and the same detector simulation.

Let us first focus on the systematics limit shown in the left column. The two panels for the different isotopes look qualitatively very similar, but the absolute performance is much better for ^{18}Ne and ^6He for γ values three times larger. This is because while we have tuned the oscillation probability for both isotopes to be the same, the flux increases as γ^2 , and therefore the event rate for the ^{18}Ne and ^6He combination scales up by a factor of about nine for the three times higher boost factors. According to eq. (2.2), the absolute sensitivities for the two isotopes would be more or less identical if the γ for ^{18}Ne and ^6He was turned up by a factor of about 3.5 and the source luminosity for ^8B and ^8Li was enhanced by a factor of about 12. This means that primary difference between the upper

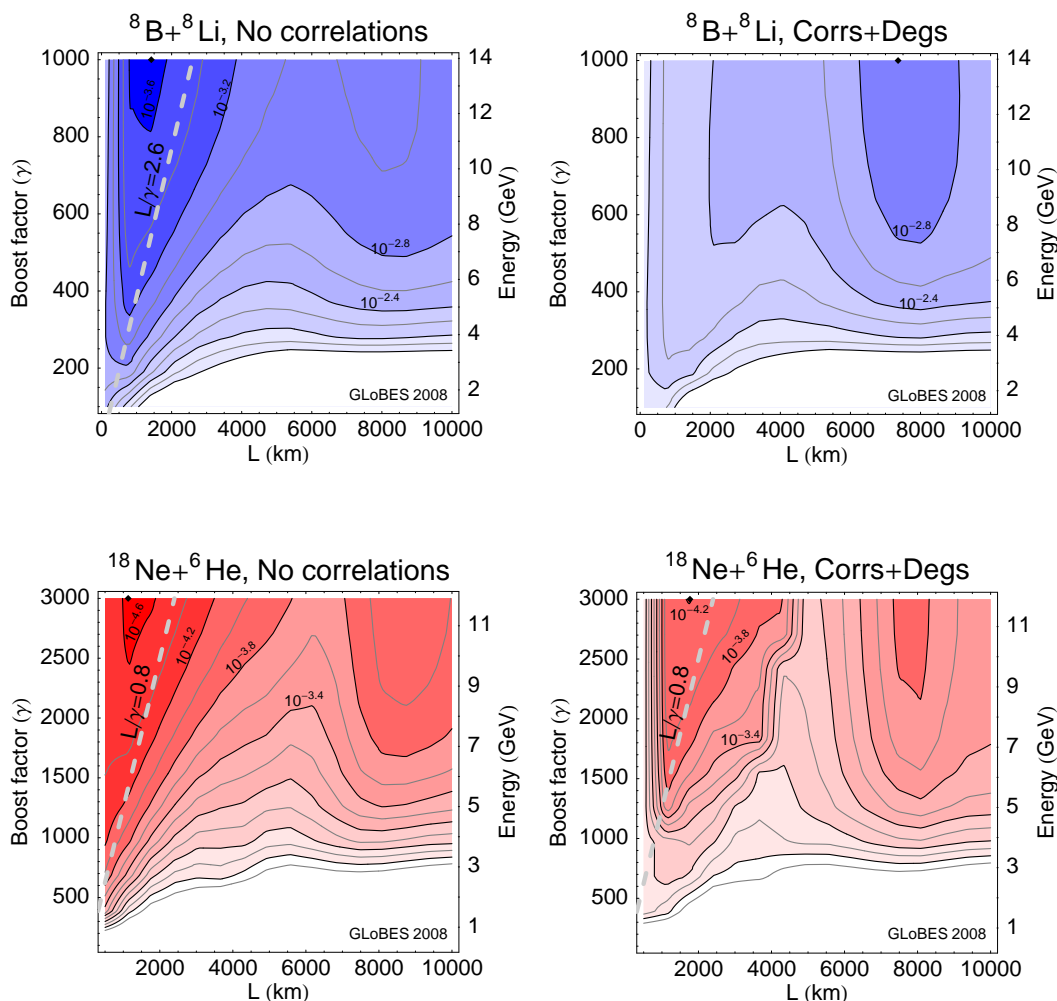


Figure 6: The $3\sigma \sin^2 2\theta_{13}$ sensitivity as a function of baseline L and boost factor γ . The $\sin^2 2\theta_{13}$ sensitivity represents the largest possible $\sin^2 2\theta_{13}$, which fits data simulated at $\sin^2 2\theta_{13}$ (true) = 0. The upper row corresponds to ${}^8\text{B}$ and ${}^8\text{Li}$, the lower row to ${}^{18}\text{Ne}$ and ${}^6\text{He}$. The left column shows the systematics limit only (i.e., the oscillation parameters are fixed with $\delta_{\text{CP}} = 0$), whereas the right column shows the final limit including correlations and degeneracies. The contours are spaced by 0.2 in $\log_{10}(\sin^2 2\theta_{13})$, where the numbers are given for some of these. The diamonds mark the absolute optimum within each plot, which are $10^{-3.66}$, $10^{-3.00}$, $10^{-4.66}$, and $10^{-4.21}$, respectively, from the upper left to the lower right. On the right axes of the plots, an energy scale is attached which corresponds to the mean peak energy $\gamma \bar{E}_0$ with \bar{E}_0 being the mean of the endpoint energies for the isotope pair.

and lower rows in figure 6 is the different event rate, but not the spectral shape and energies. We can also note from the figure that for a give set of source ions and for a given L and N_β , the sensitivity of the experiment increases as γ is increased. For the best sensitivity

reach, the baseline has then to be adjusted accordingly. The figure shows that the best choice for L roughly corresponds to tuning $L/\gamma \simeq 2.6$ for ${}^8\text{B}$ and ${}^8\text{Li}$ and $L/\gamma \simeq 0.8$ for ${}^{18}\text{Ne}$ and ${}^6\text{He}$.⁹ We show the lines for these conditions in figure 6 in the upper left panel and lower panels.¹⁰ Note that the slopes of these lines are different by about a factor of $E_0^{(1)}/E_0^{(2)} \simeq 3.5$ because the boost factors are related by eq. (2.2) in order to obtain the same neutrino energies. The optimal regions appear slightly to the left of these lines in the figure because statistics are higher at lower L .

Once the correlations and degeneracies are included (c.f. , right column of figure 6), the optimum baseline changes qualitatively for ${}^8\text{B}$ and ${}^8\text{Li}$, but not for ${}^{18}\text{Ne}$ and ${}^6\text{He}$. One can read off from the upper right panel that the magic baseline becomes the optimum baseline for about $\gamma \geq 350$, whereas for $\gamma < 350$ the shorter baseline is preferred. The reason for this was also discussed in the previous section. For $\gamma \geq 350$ one gets a peak neutrino energy greater than 5 GeV. For these energies one can obtain very large matter effects for the very long baselines and hence the oscillation probability becomes larger here. Therefore, the event rate in this regime is improved due to a combination of large matter driven oscillation probability as well as increased flux driven by larger γ . Most importantly, close to the magic baseline, the effect of δ_{CP} is almost negligible. Therefore, once the correlations and degeneracies are taken into account, this becomes the deciding factor which ensures that for $\gamma \geq 350$, the magic baseline emerges as the most optimal baseline choice for the θ_{13} sensitivity. For $\gamma < 350$, both the oscillation probability as well as the flux collimation are small, and therefore the longer baselines suffer due to the $1/L^2$ suppression factor for the event rates. As a result, despite being free from problems of correlations and degeneracies, the magic baseline loses sensitivity compared to the shorter baselines. Also note that the sensitivity for $\gamma < 350$ is rather poor, and therefore it is desirable to do the experiment at $\gamma \geq 350$.

The situation is very different for the ${}^{18}\text{Ne}$ and ${}^6\text{He}$ case, where the shorter baseline (which roughly satisfies $L/\gamma \simeq 0.8$) is always the better choice for the $\sin^2 2\theta_{13}$ sensitivity for any value of γ . Note that we have adjusted γ to keep the same peak energy (shown by the dashed lines) and hence we have the same spectral shape and the same effect of the oscillation probability as compared to ${}^8\text{B}$ and ${}^8\text{Li}$. However, the γ here is about three times larger, and that becomes the overwhelming deciding factor for the most suitable baseline. The enhancement in the flux due to the beam collimation in this case ensures that the shorter baselines have a high enough statistics to handle the problem of parameter correlations and degeneracies. Therefore, the $\sin^2 2\theta_{13}$ sensitivity is better than that of the magic baseline, which is free from a δ_{CP} dependence but suffers from the $1/L^2$ suppression. Therefore, the best sensitivity roughly follows the $L/\gamma = 0.8$ line. We remind the reader that the isolated regions obtained for $\gamma = 500$ and 650 in figure 2 also correspond to $L/\gamma \simeq 0.8$. For small values of $\sin^2 2\theta_{13}$, that are relevant here, the δ_{CP} dependent terms in the fit are extremely important at values of L close to $L_{\text{oscmax}}/2$. This corresponds to $L/\gamma \simeq 0.8$ for ${}^{18}\text{Ne}$ and ${}^6\text{He}$.

In the following section, we will compare the long (magic) with the short baseline. For

⁹In fact, the unit of L/γ is km, which we do not put explicitly.

¹⁰Since for ${}^8\text{B}$ and ${}^8\text{Li}$ we do not get the optimum at the oscillation maxima obeying $L/\gamma \simeq 2.6$ once correlations and degeneracies are taken, we do not show the line in the upper right panel.

the long (magic) baseline, we will choose $L = 7500$ km (optimum). For the short baseline we will take the local optimum obtained, which obeys $L/\gamma \simeq 2.6$ for ${}^8\text{B}$ and ${}^8\text{Li}$ and $L/\gamma \simeq 0.8$ for ${}^{18}\text{Ne}$ and ${}^6\text{He}$.

4.2 The $\text{sgn}(\Delta m_{31}^2)$ sensitivity reach

In figure 7, we show the $\sin^2 2\theta_{13}$ (true) reach for the sensitivity to the normal mass hierarchy (3σ) as a function of baseline L and boost factor γ . The $\text{sgn}(\Delta m_{31}^2)$ reach represents the minimum $\sin^2 2\theta_{13}$ (true) above which the mass hierarchy will be discovered for *any* $\sin^2 2\theta_{13}$ (true) (i.e. , there are no gaps in the sensitivity). The upper row corresponds to ${}^8\text{B}$ and ${}^8\text{Li}$, the lower row to ${}^{18}\text{Ne}$ and ${}^6\text{He}$. The left column is computed for $\delta_{\text{CP}}(\text{true}) = \pi/2$, whereas the right column is for $\delta_{\text{CP}}(\text{true}) = 3\pi/2$. Note that the $\sin \delta$ term in eq. (2.4) is positive for neutrinos and negative for antineutrinos. This means that the simulated neutrino rate is larger for $\delta_{\text{CP}}(\text{true}) = \pi/2$ and smaller for $\delta_{\text{CP}}(\text{true}) = 3\pi/2$. Therefore, statistics is better for $\delta_{\text{CP}}(\text{true}) = \pi/2$, and we expect a better mass hierarchy sensitivity. It is for this reason we have chosen to illustrate the $\text{sgn}(\Delta m_{31}^2)$ sensitivity reach for $\delta_{\text{CP}}(\text{true}) = \pi/2$ and $3\pi/2$ only in figure 7, which represent two cases close to the best case and worst case. These two cases would change their role if one used a true inverted hierarchy instead, i.e. , the best performance would be close to $\delta_{\text{CP}}(\text{true}) = 3\pi/2$, and the worst close to $\delta_{\text{CP}}(\text{true}) = \pi/2$.

For both isotope pairs, there are two main observations for the mass hierarchy measurement:

1. Longer baselines are preferred with the optimal sensitivity reach appearing at L close to the magic baseline. This is not surprising since for longer baselines the matter effect contribution becomes larger, which allows to discriminate between normal and inverted hierarchy. The sensitivity gets better at the magic baseline since the probability at the magic baseline is free of δ_{CP} related correlations and degeneracies.
2. Higher boost factors are preferred (at least within the shown ranges). First of all, the event rate increases as γ increases. However, matter effects also increase as one approaches the mantle resonance energy at about 7 GeV. Therefore, sufficiently high energies are needed to observe the mass hierarchy discriminating matter effects.

In summary, we find that the optimal choice for determining the hierarchy is $L \sim 7000 - 9000$ km, and $\gamma \gg 200$ for ${}^8\text{B}$ and ${}^8\text{Li}$ or $\gamma \gg 750$ for ${}^{18}\text{Ne}$ and ${}^6\text{He}$. Of course, for the same energy, the absolute performance is better for ${}^{18}\text{Ne}$ and ${}^6\text{He}$ as long as one can create boost factors which are three times larger.

4.3 The CP sensitivity reach

In order to discuss the CP sensitivity, we show in figure 8 the $\sin^2 2\theta_{13}$ (true) reach for the sensitivity to maximal CP violation (3σ) as a function of the baseline L and boost factor γ . The data are generated for normal hierarchy and $\delta_{\text{CP}}(\text{true}) = \pi/2$ (left panels) or $3\pi/2$ (right panels). We show in the figures the minimum $\sin^2 2\theta_{13}$ (true) above which maximal CP violation will be discovered for *any* $\sin^2 2\theta_{13}$ (true). In these figures we discard the

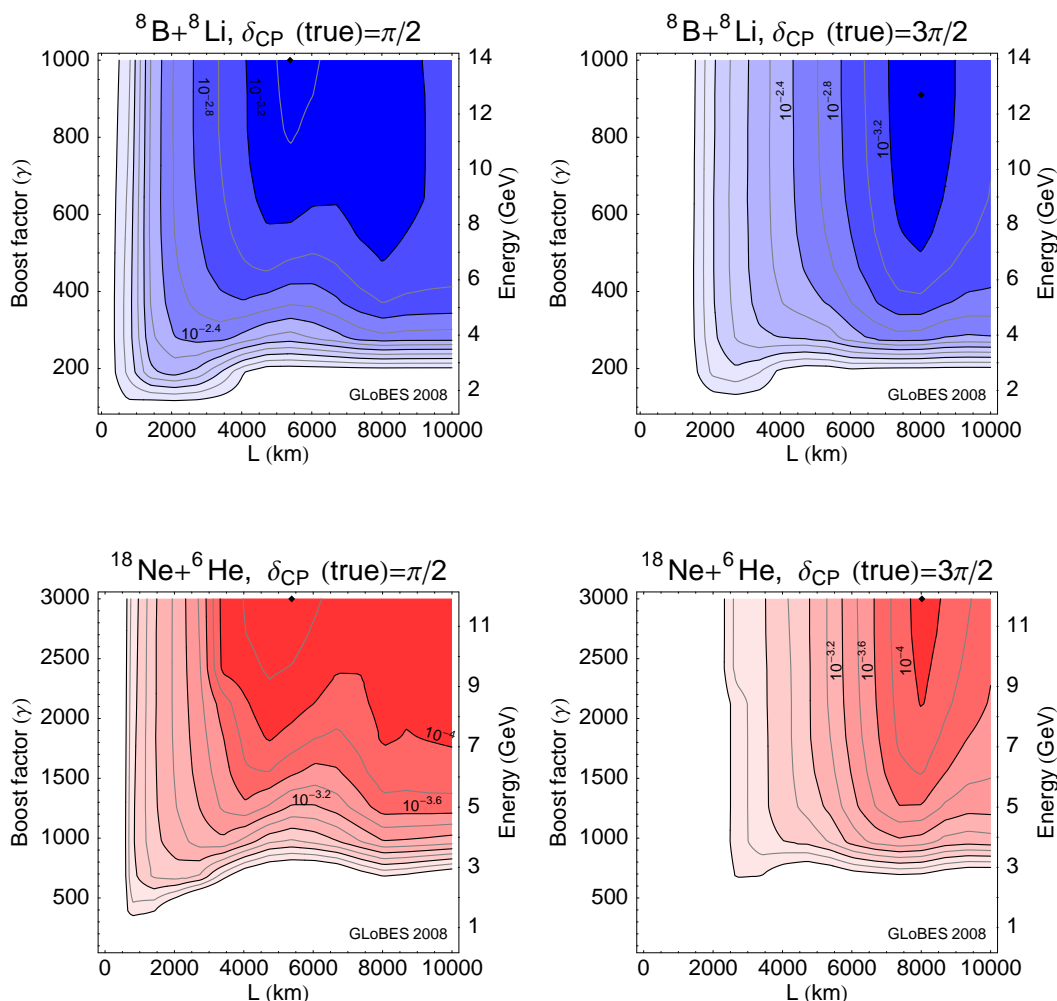


Figure 7: The $\sin^2 2\theta_{13}$ (true) reach for the sensitivity to the normal mass hierarchy (3σ) as a function of the baseline L and boost factor γ . The $\sin^2 2\theta_{13}$ (true) reach represents the minimum $\sin^2 2\theta_{13}$ (true) above which the mass hierarchy will be discovered for *any* $\sin^2 2\theta_{13}$ (true) (i.e., there are no gaps in the sensitivity). The upper row corresponds to ${}^8\text{B}$ and ${}^8\text{Li}$, while the lower row to ${}^{18}\text{Ne}$ and ${}^6\text{He}$. The left column is computed for $\delta_{\text{CP}}(\text{true}) = \pi/2$, whereas the right column is for $\delta_{\text{CP}}(\text{true}) = 3\pi/2$. The contours are spaced by 0.2 in $\log_{10}(\sin^2 2\theta_{13}(\text{true}))$, where the numbers are given for some of these. The diamonds mark the absolute optimum within each plot, which are $10^{-3.46}$, $10^{-3.36}$, $10^{-4.29}$, and $10^{-4.10}$, respectively, from the upper left to the lower right. On the right axes of the plots, an energy scale is attached which corresponds to the mean peak energy $\gamma\bar{E}_0$ with \bar{E}_0 being the mean of the endpoint energies for the isotope pair.

lower allowed islands in figure 5 (lower right panel) and consider only the upper regions. The upper row corresponds to ${}^8\text{B}$ and ${}^8\text{Li}$, the lower row to ${}^{18}\text{Ne}$ and ${}^6\text{He}$. Obviously, for the CP violation sensitivity, a shorter baseline is a must, because the magic baseline is not

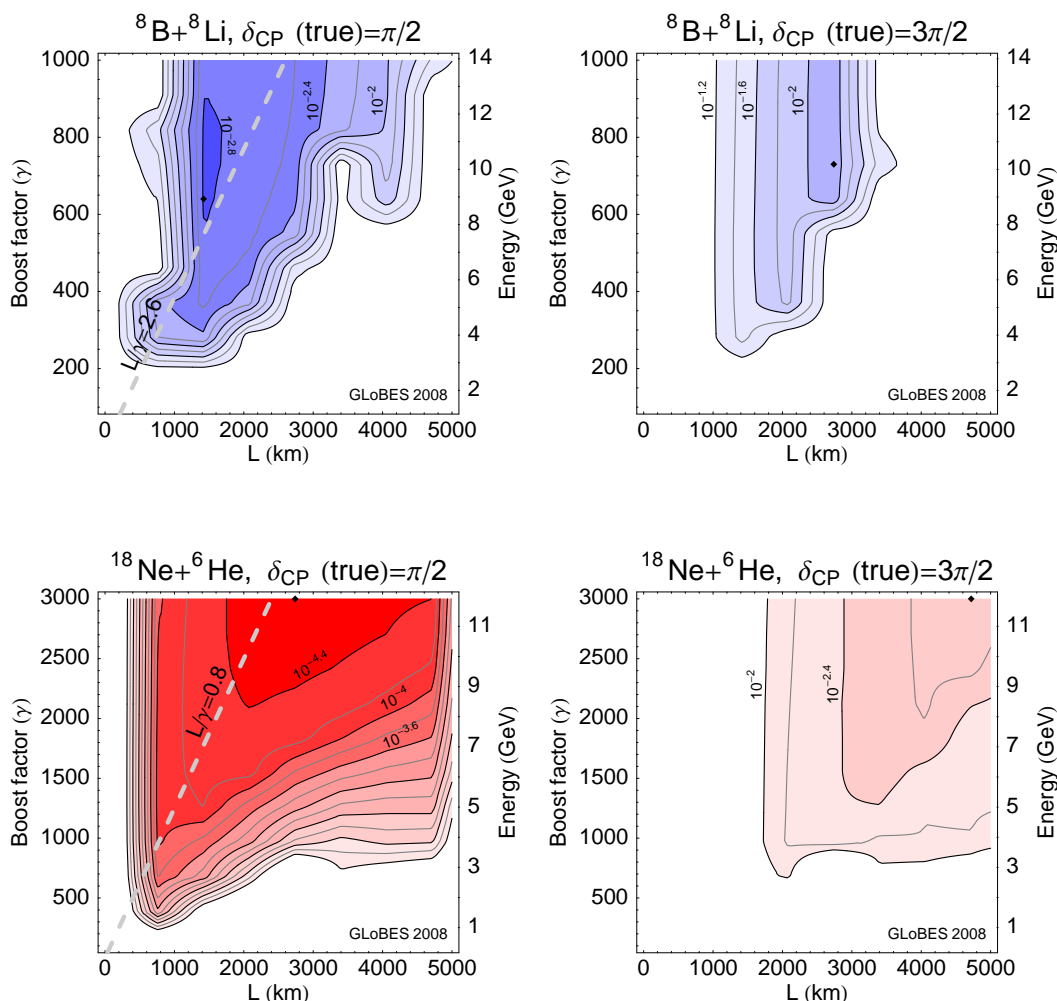


Figure 8: The $\sin^2 2\theta_{13}$ (true) reach for the sensitivity to maximal CP violation (3σ) as a function of the baseline L and boost factor γ . The $\sin^2 2\theta_{13}$ reach represents the minimum $\sin^2 2\theta_{13}$ (true) above which maximal CP violation will be discovered for *any* $\sin^2 2\theta_{13}$ (true) (i.e., there are no gaps in the sensitivity). The upper row corresponds to ${}^8\text{B}$ and ${}^8\text{Li}$, the lower row to ${}^{18}\text{Ne}$ and ${}^6\text{He}$. The left column is computed for $\delta_{\text{CP}}(\text{true}) = \pi/2$, whereas the right column is for $\delta_{\text{CP}}(\text{true}) = 3\pi/2$. The contours are spaced by 0.2 in $\log_{10}(\sin^2 2\theta_{13}(\text{true}))$, where the numbers are given for some of these. Here a true normal hierarchy is assumed. The diamonds mark the absolute optimum within each plot, which are $10^{-2.82}$, $10^{-2.14}$, $10^{-4.50}$, and $10^{-2.79}$, respectively, from the upper left to the lower right. On the right axes of the plots, an energy scale is attached which corresponds to the mean peak energy $\gamma\bar{E}_0$ with \bar{E}_0 being the mean of the endpoint energies for the isotope pair.

sensitive to δ_{CP} . Hence, we only show baselines up to 5000 km in this figure, since there is no sensitivity for longer baselines. As for the mass hierarchy reach, here too the performance for the normal hierarchy is best for $\delta_{\text{CP}}(\text{true}) = \pi/2$ and worst for $\delta_{\text{CP}}(\text{true}) = 3\pi/2$.

However, their roles change for the inverted hierarchy. Note that the poor sensitivity close to $\delta_{\text{CP}}(\text{true}) \simeq 3\pi/2$ mainly comes from unresolved degeneracies due to poor statistics. Combining data of this set-up with a second (much longer) baseline could help in resolving the degeneracies and improving the sensitivity. Here we focus on the left column of figure 8 for the following discussion.

A comparison of the upper left and lower left panels of figure 8 reveals qualitative differences between the sensitivities coming from the two pairs of isotopes. We observe that the ^{18}Ne and ^6He combination is far superior for probing the CP phase. We had already seen this feature in the earlier section when we had compared the CP sensitivity reach of the two sets of isotopes for the same γ . In fact, the sensitivity to maximal CP violation improves with γ for ^{18}Ne and ^6He , and we find that the best case shown by the diamond appears for the highest γ we have taken. For ^8B and ^8Li the sensitivity in general is comparatively poorer and does not scale with γ . In fact, the γ dependence of the sensitivity is rather weak with the best CP sensitivity coming for $\gamma \simeq 650$. As far as the possible baselines are concerned, for $\delta_{\text{CP}}(\text{true}) = \pi/2$ the optimal baselines roughly follow the $L/\gamma = 2.6$ line for ^8B and ^8Li , and the $L/\gamma = 0.8$ line for ^{18}Ne and ^6He .

5. The impact of luminosity

In this section, we study the impact of increasing the overall number of events through either increasing the size of the detector, the exposure time, detector efficiency, or the number of useful ion decays. In order to discuss this, we introduce a luminosity scaling factor multiplying the overall luminosity (useful isotope decays \times running time \times detector mass \times detector efficiency) for both neutrinos and antineutrinos. Note that the luminosity scaling factor corresponds to a reference luminosity, i.e., $1.1 \times 10^{18}(\text{year}^{-1}) \times 5(\text{year}) \times 50(\text{kton}) \times 0.76$ for the neutrino beam. For the antineutrino beam we use 2.9×10^{18} useful decays per year. We attempt to determine the optimal value for the luminosity, γ and L . We fix γ at certain benchmark values and compare the performance of short baselines given by $L/\gamma \simeq 2.6$ for ^8B and ^8Li and $L/\gamma \simeq 0.8$ for ^{18}Ne and ^6He , with the magic baseline. For comparison between the isotopes, we use both the approaches discussed in section 2.1. That is, we compare the physics reach of ^8B and ^8Li with that of ^{18}Ne and ^6He , both at same fixed values of γ corresponding to the same input, as well as with γ for ^{18}Ne and ^6He scaled by a factor of about 3.5 to get the same peak neutrino energy, and hence the same neutrino energies. We use the same definition of the performance indicators as in section 4, i.e., we demand that there is sensitivity for all $\sin^2 2\theta_{13}$ larger than the given sensitivity limits (which excludes the regions separated by the gaps).

5.1 The θ_{13} sensitivity

In figure 9, we show the $\sin^2 2\theta_{13}$ sensitivity (3σ) as a function of the luminosity scaling factor. The panels represent the different isotopes and different γ values as given in the captions. The dot-dashed curves correspond to the magic baseline (MB) with $L = 7500$ km fixed, the solid curves to a short baseline with an L/γ depending on the isotope. The upper row is for ^8B and ^8Li . The middle and lower rows are for ^{18}Ne and ^6He , with the middle

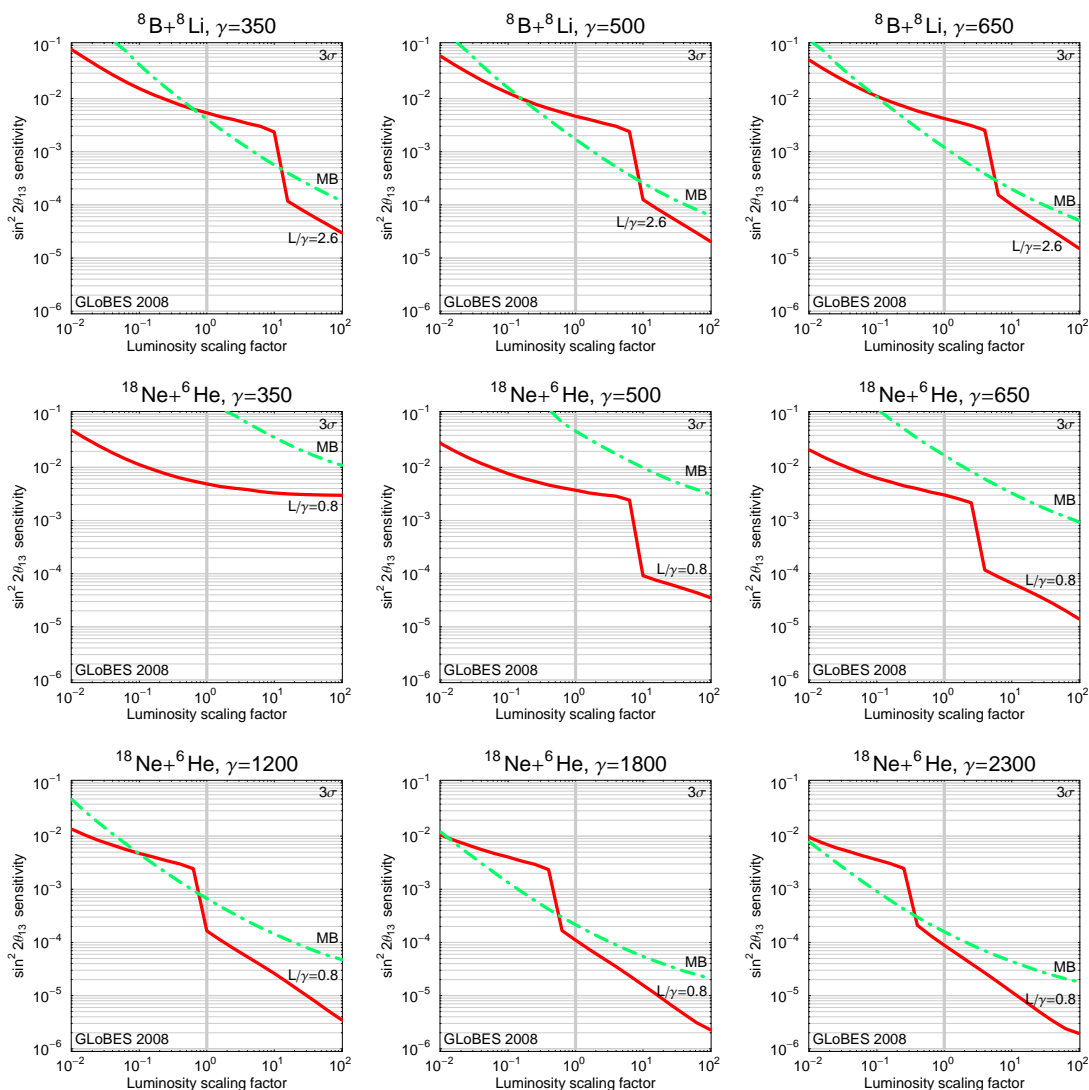


Figure 9: The $\sin^2 2\theta_{13}$ sensitivity (3σ) as a function of a luminosity scaling factor. The luminosity scaling factor multiplies the overall luminosities (useful isotope decays \times running time \times detector mass \times detector efficiency) for both neutrinos and antineutrinos. The panels represent the different isotopes and different γ as indicated in the captions. The green dashed-dotted curves correspond to the magic baseline “MB” with $L = 7500$ km fixed, the red solid curves to a short baseline with an L/γ depending on the isotope (c.f., lines for fixed L/γ in figure 6). A true normal hierarchy is assumed.

row for same γ as ${}^8\text{B}$ and ${}^8\text{Li}$, whereas the lower row is for γ 's scaled up by a factor of about 3.5. That means that the middle row represents the same accelerator effort as the upper row in terms of γ , and the lower row represents similar neutrino energies to the upper row.

There are a number of interesting observations from figure 9. First, for the shorter baseline, statistics are crucial for resolving the degeneracies, and we obtain a sudden en-

hancement of the sensitivity at some value of the luminosity scaling factor. This point is visible as the edge in the luminosity scaling, where the degenerate solution is ruled out at the 3σ C.L. For the magic baseline, degeneracies are hardly relevant and we find that the sensitivities exhibit an almost power law scaling with statistics. Second, the curves for the shorter baseline cross the ones for the magic baseline twice in almost all the panels in the upper and lower rows. For ${}^8\text{B}$ and ${}^8\text{Li}$, the standard assumed luminosity (luminosity scaling factor one) is typically in the window where the magic baseline performs better. Only for the $\gamma = 350$ case, the shorter baseline is comparable with the magic baseline for the standard luminosity. For ${}^{18}\text{Ne}$ and ${}^6\text{He}$, the short baseline is typically better for the standard luminosity and smaller γ (middle row). However, for ${}^{18}\text{Ne} + {}^6\text{He}$ and $\gamma \gg 1000$, already a factor of two loss in luminosity makes the magic baseline the better choice.

Let us now come back to the conditions in eq. (2.1). Since we have chosen the upper and lower rows in figure 9 such that the gammas scale inverse to the endpoint energies, this formula indicated that the same physics should be obtained for about a factor of 12 difference in luminosity. Let us pick a simple feature where we could test this conclusion: take a look at the edge of the sensitivity jumps for the short baselines. In the lower row, this sensitivity jumps happen for about one order of magnitude less luminosity than in the upper row, which confirms the expectation. This means that a factor of 12 in the number of useful ion decays is indeed needed to reproduce the same physics if one uses ${}^8\text{B}$ and ${}^8\text{Li}$ instead of ${}^{18}\text{Ne}$ and ${}^6\text{He}$. However, this comes for a price: A factor of 3.5 higher gamma is needed for ${}^{18}\text{Ne} + {}^6\text{He}$ than for ${}^8\text{B} + {}^8\text{Li}$.

5.2 The $\text{sgn}(\Delta m_{31}^2)$ sensitivity reach

In figure 10, we show the $\sin^2 2\theta_{13}$ reach for the sensitivity to the normal mass hierarchy (3σ) as a function of the luminosity scaling factor. The panels represent the different isotopes and different γ values as given in the captions. The dashed-dotted curves correspond to the long magic baseline “MB” with $L = 7500$ km fixed and very little dependence on the true δ_{CP} , the other two sets of curves to a short baseline with an L/γ depending on the isotope (c.f., lines for fixed L/γ in figure 6). The solid curves are computed for a $\delta_{\text{CP}}(\text{true}) = \pi/2$, the dashed curves for a $\delta_{\text{CP}}(\text{true}) = 3\pi/2$.

For the mass hierarchy sensitivity, the magic baseline exhibits almost a power law scaling with statistics, with the best absolute performance in all cases for all luminosities in the upper and lower rows. For the shorter baselines, the performance depends crucially on the true δ_{CP} . For $\delta_{\text{CP}} \simeq \pi/2$, the scaling behaves similar to the magic baseline, and there are only very few jumps. That means that changes in the chosen standard luminosity (scaling factor one) do not have a strong effect. Only for the ${}^{18}\text{Ne}$ and ${}^6\text{He}$ combination with very high γ , increasing the luminosity resolves the (wrong hierarchy) intrinsic degeneracy and this improves the performance of the set-up such that the sensitivities approach the ones obtained for the magic baseline. For $\delta_{\text{CP}} \simeq 3\pi/2$, the mass hierarchy sensitivity is basically not present for ${}^8\text{B}$ and ${}^8\text{Li}$, and for ${}^{18}\text{Ne}$ and ${}^6\text{He}$ for $\gamma \ll 2000$. In summary, for the mass hierarchy sensitivity, the magic baseline is a safe choice, independent of the luminosity. Similar sensitivity can be achieved by the shorter baseline only for extreme choices of γ and N_β .

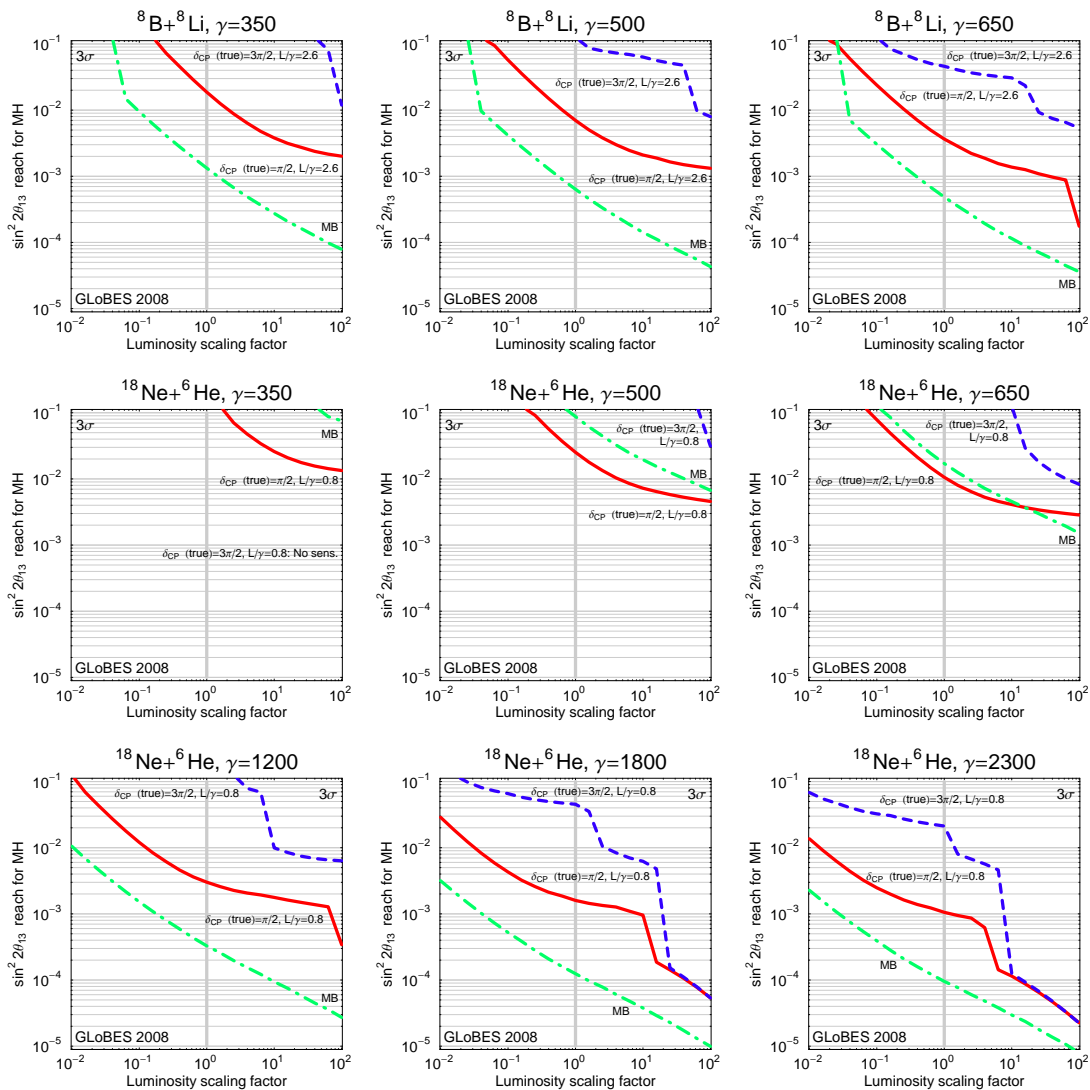


Figure 10: The $\sin^2 2\theta_{13}$ reach for the sensitivity to the normal mass hierarchy (3σ) as a function of a luminosity scaling factor. The luminosity scaling factor multiplies the overall luminosities (useful isotope decays \times running time \times detector mass \times detector efficiency) for both neutrinos and antineutrinos. The panels represent the different isotopes and different γ as indicated in the captions. The green dashed-dotted curves correspond to the long magic baseline “MB” with $L = 7500$ km fixed and very little dependence on the true δ_{CP} , the other two sets of curves to a short baseline with an L/γ depending on the isotope (c.f., lines for fixed L/γ in figure 6). The red solid curves are computed for a true $\delta_{CP} = \pi/2$, the blue dashed curves for a true $\delta_{CP} = 3\pi/2$.

5.3 The CP sensitivity reach

The $\sin^2 2\theta_{13}$ reach for the sensitivity to maximal CP violation (3σ) as a function of the luminosity scaling factor is shown in figure 11. The luminosity scaling factor multiplies the overall luminosities (useful isotope decays \times running time \times detector mass \times detector

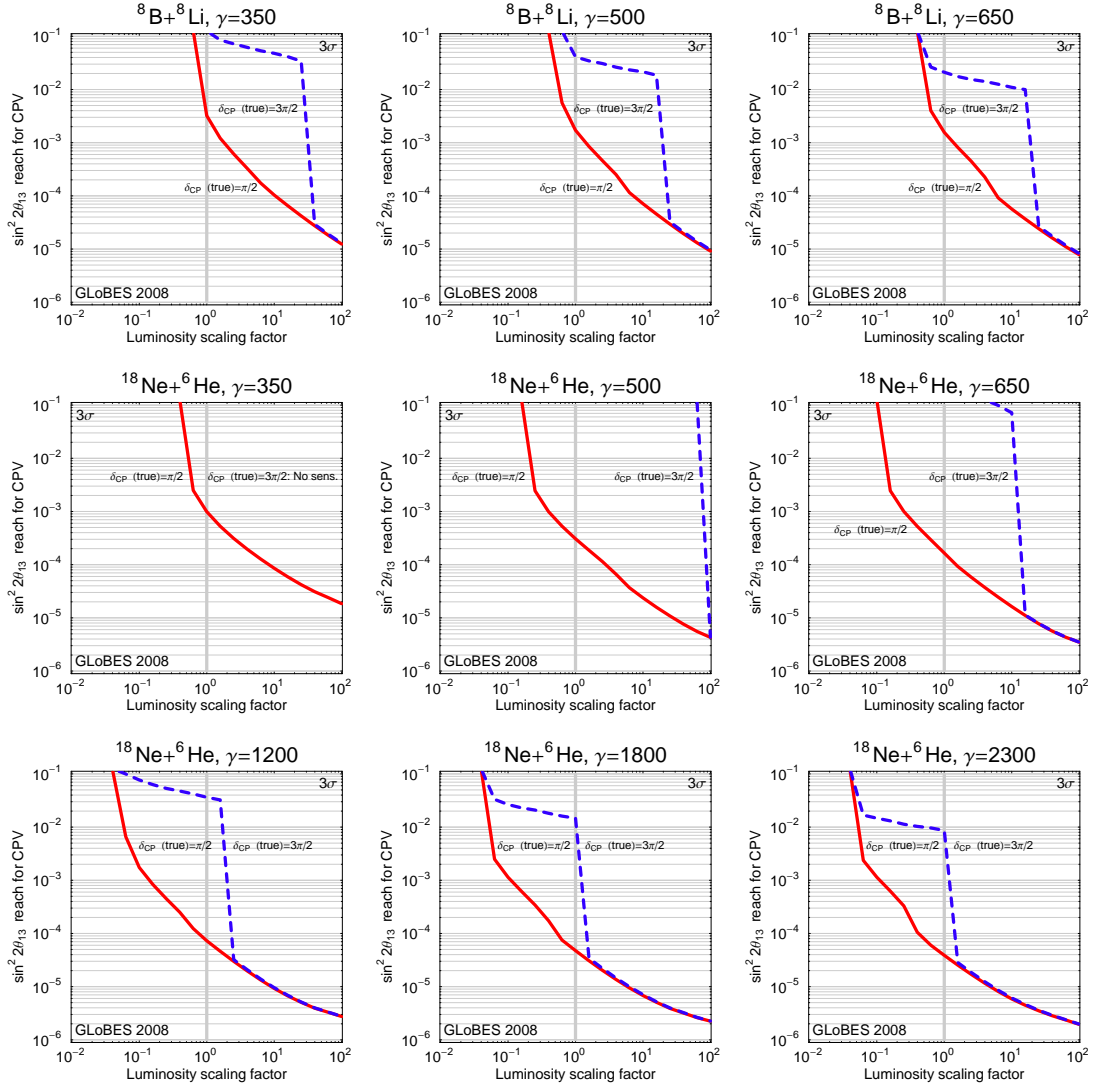


Figure 11: The $\sin^2 2\theta_{13}$ reach for the sensitivity to maximal CP violation (3σ) as a function of a luminosity scaling factor. The luminosity scaling factor multiplies the overall luminosities (useful isotope decays \times running time \times detector mass \times detector efficiency) for both neutrinos and antineutrinos. The panels represent the different isotopes and different γ as given in the captions. For all curves, the short baselines are used, i.e., $L/\gamma = 2.6$ for the upper row, and $L/\gamma = 0.8$ for the middle and lower rows. The red solid curves are computed for a true $\delta_{CP} = \pi/2$, the blue dashed curves for a true $\delta_{CP} = 3\pi/2$. A true normal hierarchy is assumed.

efficiency) for both neutrinos and antineutrinos. The panels represent the different isotopes and different γ values as given in the captions. For all curves, the short baselines are used, i.e., $L/\gamma = 2.6$ for the upper row, and $L/\gamma = 0.8$ for the middle and lower rows, because there is no CP violation sensitivity at the magic baseline. The solid curves are computed for $\delta_{CP}(\text{true}) = \pi/2$, the dashed curves for $\delta_{CP}(\text{true}) = 3\pi/2$.

The scalings are very similar to the mass hierarchy sensitivity: For $\delta_{\text{CP}} \simeq \pi/2$ there are no jumps, and for $\delta_{\text{CP}} \simeq 3\pi/2$ the intrinsic degeneracy can be resolved above a certain threshold luminosity (because it is then lifted over the $\chi^2 = 9$ line). All curves look qualitatively very similar, no matter what γ or isotope is used. However, the absolute performance is better for $^{18}\text{Ne} + ^6\text{He}$ even for the same γ .

As far as the chosen reference luminosity (scaling factor one) is concerned, the ^8B and ^8Li beam is operated in a region where substantial luminosity changes will not affect the result. However, for ^{18}Ne and ^6He , already a factor of two to three luminosity increase would be sufficient to resolve the intrinsic degeneracy and to boost the performance at $\delta_{\text{CP}}(\text{true}) = 3\pi/2$ for the lower row. Note that such a boost could also be achieved by a synergistic degeneracy resolver, such as the magic baseline as second baseline.

5.4 Comparison with a neutrino factory

As far as the comparison to a Neutrino Factory is concerned, our figures 6 (θ_{13}), 7 ($\text{sgn}(\Delta m_{31}^2)$), and 8 (maximal CP violation) correspond to figures 3 (θ_{13}), 6 ($\text{sgn}(\Delta m_{31}^2)$), and 5 (maximal CP violation) in ref. [38] for a Neutrino Factory, which means that they allow for a direct qualitative comparison. While for the beta beams, the boost factor is on the vertical axis, for a Neutrino Factory, the muon energy is on the vertical axis. Both are proportional to the peak neutrino energy. Comparing the beta beam and Neutrino Factory qualitatively, we find a similar behavior as a function of baseline and neutrino energy for both isotope pairs and all performance indicators, except from ^{18}Ne and ^6He and the θ_{13} sensitivity. In this case, the shorter baseline dominates, which corresponds to the correlation only case in figure 3 of [38]. Quantitatively, the best performance for the θ_{13} and hierarchy measurements with the Neutrino Factory comes at the magic baseline. The Neutrino Factory chosen here corresponds to 10^{21} useful muon decays per year with muon energy of 50 GeV and a 50 kton magnetized iron detector. If the detector efficiency is taken as about 40% and background rejection factor as 1×10^{-5} , the sensitivity reaches in $\sin^2 2\theta_{13}(\text{true})$ for the two performance indicators θ_{13} and $\text{sgn}(\Delta m_{31}^2)$ at the magic baseline are about 2×10^{-4} and 1×10^{-4} respectively [49]. Best CP violation sensitivity comes at $L \simeq 3000 - 5000$ km. At this baseline, the $\sin^2 2\theta_{13}$ reach for maximal CP violation is 7×10^{-5} [49]. These numbers can be compared with the corresponding reach for the optimal Beta-beam set-ups identified in this paper. One can see that the Neutrino Factory outperforms the Beta-beam for the standard luminosity chosen here and for values of $\gamma < 650$. However, for higher values of γ and higher luminosities, Beta-beam returns a performance which is comparable to that of a Neutrino Factory. Recall that we have taken conservative estimates for the number of useful ion decays per year and the size of the detector. In principle, it should be possible to have at least 10 times more useful decays per year [61]. In addition, for some ranges of γ it should be possible to use megaton water detectors with Beta-beams, and this would again increase the luminosity by factor of 10.

6. Summary and conclusions

Beta-beams provide intense and well understood neutrino fluxes of a single flavor. They

have very low beam-related backgrounds and very low systematic uncertainties, and are hence ideal for precision experiments. While detailed physics reach analyses of specific projects involving Beta-beams have been performed in the literature, greenfield set-ups have been less extensively studied. In this study, we have considered the Beta-beam option as a greenfield scenario and have identified the optimal set-ups for an iron calorimeter as the detector. We have optimized for maximal reaches in $\sin^2 2\theta_{13}$, i.e., our Beta-beams are designed to measure $\sin^2 2\theta_{13}$, CP violation, and the mass hierarchy for as small $\sin^2 2\theta_{13}$ as possible. We have studied two pairs of plausible source ions for the Beta-beam: the standard ions ^{18}Ne and ^6He , which have been extensively studied in the literature, as well as the new candidates ^8B and ^8Li . For each pair of source ions, we have optimized the experimental set-up as a function of baseline L , boost factor γ , and luminosity. The luminosity is proportional to the number of useful ion decays, detector efficiency, size of detector, and exposure time. We have followed two complementary approaches for our study:

1. Fixing the input parameters of the beam and looking for the sensitivity reach between the two pairs of ions as a function of the baseline.
2. Matching the shape (energies) of the event spectrum and luminosity for the two sets of ions and studying the required input parameters of the beam as a function of the baseline.

In both approaches, we have compared the physics reach for the two pairs of ions in order to identify the optimal conditions for the sensitivity reach.

In order to compare the two different pairs of isotopes, it has been useful to determine the conditions for the same physics output, i.e., neutrino energies, matter effects, etc., at the same baseline. Since the total flux at the detector for a fixed baseline is proportional to $N_\beta \gamma^2$ (with N_β being the useful ion decays per year) and the peak neutrino energy is approximately given by γE_0 , we have identified the conditions for obtaining similar neutrino spectral shape as $N_\beta^{B+Li} \simeq 12 \cdot N_\beta^{Ne+He}$, $\gamma^{Ne+He} \simeq 3.5 \cdot \gamma^{B+Li}$. This means that, because of the stronger forward collimation of the beam, a smaller required γ for ^8B and ^8Li has, in principle, to be compensated by a correspondingly larger number of useful ion decays. We have verified this behavior in realistic simulations.

As the next step, we have fixed the beam input parameters N_β to 1.1×10^{18} (ν_e) and 2.9×10^{18} ($\bar{\nu}_e$) useful ion decays/year, and γ to 350, 500, and 650, respectively. Because of the higher neutrino energies for the same γ , ^8B and ^8Li experience stronger matter effects than ^6He and ^{18}Ne . This has two major implications: First, if the matter resonance energy can be covered, the $1/L^2$ dependence of the events is reduced for ^8B and ^8Li , and the event rates increase at longer baselines. Second, because of the matter resonant or anti-resonant behavior, the mass hierarchy can be much easily determined. Both implications make the magic baseline attractive for the $\sin^2 2\theta_{13}$ and mass hierarchy measurements using ^8B and ^8Li , has had been shown in [39–41]. For ^6He and ^{18}Ne , on the other hand, a much shorter baseline is preferable. For CP violation however, the ^6He and ^{18}Ne turn out to have a discovery reach [46, 47] about one order of magnitude better than for ^8B and ^8Li at a relatively short baseline $L \simeq 600 - 1000$ km (depending on the γ chosen). Similar to the Neutrino

Factory, we therefore observe a tension between measuring the mass hierarchy (preferring long baselines and high energies close to the matter resonance energy), and measuring CP violation (preferring short baselines determined by the oscillation maximum with as little matter effects as possible). Therefore, in order to optimally access all performance indicators, one may finally require both pairs of ions [51] and two baselines [45].

If one wants to compare similar neutrino energies for the two isotope pairs, i.e., one fixes the output, one has to include γ 's about a factor of three higher for ${}^6\text{He}$ and ${}^{18}\text{Ne}$ than for ${}^8\text{B}$ and ${}^8\text{Li}$. From an optimization of our performance indicators in the L - γ plane (while still keeping the useful ion decays fixed), we have learned that there are, in principle, two sets of baselines which exhibit local optima in the performances:

- A short baseline with L [km]/ $\gamma \simeq 0.8$ for ${}^6\text{He}$ and ${}^{18}\text{Ne}$, and L [km]/ $\gamma \simeq 2.6$ for ${}^8\text{B}$ and ${}^8\text{Li}$.
- A long “magic” baseline $L \simeq 7500$ km, where the dependence on δ_{CP} vanishes.

While the shorter baseline is always the better choice for the CP violation measurement, the choice between the longer and shorter baseline for the $\sin^2 2\theta_{13}$ sensitivity depends on γ and the isotope used. For ${}^8\text{B}$ and ${}^8\text{Li}$, the magic baseline is preferred for $\gamma > 350$, while for ${}^6\text{He}$ and ${}^{18}\text{Ne}$, the shorter baseline is always preferred for any realistic γ because of the higher event rates for the same neutrino energies. For the mass hierarchy sensitivity, the magic baseline tends to be the best choice for ${}^8\text{B}$ and ${}^8\text{Li}$ already for $\gamma > 300$, while for ${}^6\text{He}$ and ${}^{18}\text{Ne}$ a relatively high $\gamma > 1000$ is required. However, in the latter case, the short baseline alone will not be sufficient to measure the mass hierarchy, another longer baseline is required.

As the last step, we have focused on the above two sets of baselines, and we have varied the luminosity. For the $\sin^2 2\theta_{13}$ sensitivity, we have demonstrated that the choice between the short and long baseline depends on the reference luminosity as well. For the mass hierarchy sensitivity, the conclusion to use a longer baseline is very robust. And for the CP violation sensitivity, which is only present at the short baseline, the luminosity plays a crucial role to resolve (otherwise present) degeneracies for $\delta_{\text{CP}} = 3\pi/2$ (for the normal hierarchy) or $\delta_{\text{CP}} = \pi/2$ (for the inverted hierarchy). Note that this degeneracy resolution could also be achieved with the combination of two baselines.

We conclude that a greenfield Beta-beam could have excellent sensitivity reaches for the $\sin^2 2\theta_{13}$, mass hierarchy, and CP violation discoveries. Comparison of the physics reach between (${}^8\text{B}$, ${}^8\text{Li}$) and (${}^6\text{He}$, ${}^{18}\text{Ne}$) pairs is not at all straightforward. On the one hand, ${}^8\text{B}$ and ${}^8\text{Li}$ produce a given neutrino energy by a boost factor about 3.5 times lower than that needed for ${}^{18}\text{Ne}$ and ${}^6\text{He}$. Therefore, the first pair of ions would be the preferred choice if one needed higher energy Beta-beams within the constraint of the envisaged accelerator facilities. On the other hand, lower boost factors result in a lower beam collimation, and hence lower statistics, which would have to be compensated by a higher luminosity. For ${}^{18}\text{Ne}$ and ${}^6\text{He}$ one would need a γ about 3.5 times larger than for ${}^8\text{B}$ and ${}^8\text{Li}$ to obtain the same neutrino energies. This constraint stretches the demanded γ to the prohibitively large regime. The statistics, in return, would be about a factor

of 10 higher. Therefore, the optimal selection of ions and baselines crucially depends on the boost factor and luminosity used, as well as the chosen detector technology. For our reference luminosity and iron detector, if the Beta-beam is operated at a realistically “high” $\gamma \sim 500$, one would optimally use ^{18}Ne and ^6He at the short baseline for CP violation, ^8B and ^8Li at the magic baseline for mass hierarchy, and either ^{18}Ne and ^6He at the short baseline or ^8B and ^8Li at the magic baseline for $\sin^2 2\theta_{13}$ discovery.

Acknowledgments

The authors acknowledge the HRI cluster facilities for computation. This work has been supported by the Neutrino Project under the XI Plan of Harish-Chandra Research Institute. W.W. would like to acknowledge support from Emmy Noether program of Deutsche Forschungsgemeinschaft, and through DFG grant 446 IND 111/9/07. In addition, he would like to thank the members of HRI for their warm hospitality during his stay.

References

- [1] B.T. Cleveland et al., *Measurement of the solar electron neutrino flux with the homestake chlorine detector*, *Astrophys. J.* **496** (1998) 505;
SAGE collaboration, J.N. Abdurashitov et al., *Solar neutrino flux measurements by the Soviet-American Gallium Experiment (SAGE) for half the 22 year solar cycle*, *J. Exp. Theor. Phys.* **95** (2002) 181 [*Zh. Eksp. Teor. Fiz.* **122** (2002) 211] [[astro-ph/0204245](#)];
GALLEX collaboration, W. Hampel et al., *GALLEX solar neutrino observations: results for GALLEX IV*, *Phys. Lett.* **B 447** (1999) 127;
SUPER-KAMIOKANDE collaboration, S. Fukuda et al., *Determination of solar neutrino oscillation parameters using 1496 days of Super-Kamiokande I data*, *Phys. Lett.* **B 539** (2002) 179 [[hep-ex/0205075](#)];
SNO collaboration, B. Aharmim et al., *Electron energy spectra, fluxes, and day-night asymmetries of B-8 solar neutrinos from measurements with NaCl dissolved in the heavy-water detector at the Sudbury Neutrino Observatory*, *Phys. Rev.* **C 72** (2005) 055502 [[nucl-ex/0502021](#)];
BOREXINO collaboration, C. Arpesella et al., *First real time detection of Be7 solar neutrinos by Borexino*, *Phys. Lett.* **B 658** (2008) 101 [[arXiv:0708.2251](#)].
- [2] KAMLAND collaboration, T. Araki et al., *Measurement of neutrino oscillation with KamLAND: Evidence of spectral distortion*, *Phys. Rev. Lett.* **94** (2005) 081801 [[hep-ex/0406035](#)];
KAMLAND collaboration, S. Abe et al., *Precision measurement of neutrino oscillation parameters with KamLAND*, [arXiv:0801.4589](#).
- [3] SUPER-KAMIOKANDE collaboration, Y. Ashie et al., *A measurement of atmospheric neutrino oscillation parameters by Super-Kamiokande I*, *Phys. Rev.* **D 71** (2005) 112005 [[hep-ex/0501064](#)].
- [4] M. Apollonio et al., *Search for neutrino oscillations on a long base-line at the CHOOZ nuclear power station*, *Eur. Phys. J.* **C 27** (2003) 331 [[hep-ex/0301017](#)].
- [5] K2K collaboration, E. Aliu et al., *Evidence for muon neutrino oscillation in an accelerator-based experiment*, *Phys. Rev. Lett.* **94** (2005) 081802 [[hep-ex/0411038](#)].

- [6] MINOS collaboration, D.G. Michael et al., *Observation of muon neutrino disappearance with the MINOS detectors and the NuMI neutrino beam*, *Phys. Rev. Lett.* **97** (2006) 191801 [[hep-ex/0607088](#)].
- [7] M.C. Gonzalez-Garcia and M. Maltoni, *Phenomenology with massive neutrinos*, *Phys. Rept.* **460** (2008) 1 [[arXiv:0704.1800](#)];
M. Maltoni, T. Schwetz, M.A. Tortola and J.W.F. Valle, *Status of global fits to neutrino oscillations*, *New J. Phys.* **6** (2004) 122 [[hep-ph/0405172](#)];
S. Choubey, *Probing the neutrino mass matrix in next generation neutrino oscillation experiments*, *Phys. Atom. Nucl.* **69** (2006) 1930 [[hep-ph/0509217](#)];
S. Goswami, *Neutrino oscillations and masses*, *Int. J. Mod. Phys. A* **21** (2006) 1901;
A. Bandyopadhyay, S. Choubey, S. Goswami, S.T. Petcov and D.P. Roy, *Update of the solar neutrino oscillation analysis with the 766 Ty KamLAND spectrum*, *Phys. Lett. B* **608** (2005) 115 [[hep-ph/0406328](#)];
G.L. Fogli et al., *Global analysis of three-flavor neutrino masses and mixings*, *Prog. Part. Nucl. Phys.* **57** (2006) 742 [[hep-ph/0506083](#)].
- [8] A. Cervera et al., *Golden measurements at a neutrino factory*, *Nucl. Phys. B* **579** (2000) 17 [*Erratum ibid.* **B 593** (2001) 731] [[hep-ph/0002108](#)].
- [9] ICARUS collaboration, P. Aprili et al., *The ICARUS experiment: a second-generation proton decay experiment and neutrino observatory at the Gran Sasso laboratory. Cloning of T600 modules to reach the design sensitive mass. (Addendum)*, CERN-SPSC-2002-027.
- [10] OPERA collaboration, M. Guler et al., *OPERA: an appearance experiment to search for $\nu_\mu \leftrightarrow \nu_\tau$ oscillations in the CNGS beam. Experimental proposal*, CERN-SPSC-2000-028.
- [11] THE T2K collaboration, Y. Itow et al., *The JHF-Kamioka neutrino project*, [hep-ex/0106019](#).
- [12] NOvA collaboration, D.S. Ayres et al., *NOvA proposal to build a 30 kiloton off-axis detector to study neutrino oscillations in the Fermilab NuMI beamline*, [hep-ex/0503053](#).
- [13] F. Ardellier et al., *Letter of intent for double-CHOOZ: a search for the mixing angle θ_{13}* , [hep-ex/0405032](#);
DOUBLE CHOOZ collaboration, F. Ardellier et al., *Double Chooz: a search for the neutrino mixing angle θ_{13}* , [hep-ex/0606025](#).
- [14] P. Huber, M. Lindner, M. Rolinec, T. Schwetz and W. Winter, *Prospects of accelerator and reactor neutrino oscillation experiments for the coming ten years*, *Phys. Rev. D* **70** (2004) 073014 [[hep-ph/0403068](#)].
- [15] P. Zucchelli, *A novel concept for a $\bar{\nu}_e / \nu_e$ neutrino factory: the beta beam*, *Phys. Lett. B* **532** (2002) 166.
- [16] M. Lindroos, *The acceleration and storage of radioactive ions for a beta-beam facility*, [physics/0312042](#); *The technical challenges of beta-beams*, *Nucl. Phys.* **155** (Proc. Suppl.) (2006) 48.
- [17] *Beta-beam homepage*, <http://beta-beam.web.cern.ch/beta-beam/>.
- [18] S. Geer, *Neutrino beams from muon storage rings: characteristics and physics potential*, *Phys. Rev. D* **57** (1998) 6989 [*Erratum ibid.* **D 59** (1999) 039903] [[hep-ph/9712290](#)].
- [19] A. Cervera, *MIND performance and prototyping*, talk at NuFact07, <http://fphy.hep.okayama-u.ac.jp/nufact07/>, Okayama University, Okayama Japan, (2007).

- [20] P. Huber, M. Mezzetto and T. Schwetz, *On the impact of systematical uncertainties for the CP-violation measurement in superbeam experiments*, *JHEP* **03** (2008) 021 [[arXiv:0711.2950](#)].
- [21] *International scoping study of a future neutrino factory and super-beam facility*, <http://www.hep.ph.ic.ac.uk/iss/>.
- [22] ISS PHYSICS WORKING GROUP collaboration, A. Bandyopadhyay et al., *Physics at a future neutrino factory and super-beam facility*, [arXiv:0710.4947](#).
- [23] J. Burguet-Castell, M.B. Gavela, J.J. Gomez-Cadenas, P. Hernández and O. Mena, *On the measurement of leptonic CP-violation*, *Nucl. Phys.* **B 608** (2001) 301 [[hep-ph/0103258](#)].
- [24] H. Minakata and H. Nunokawa, *Exploring neutrino mixing with low energy superbeams*, *JHEP* **10** (2001) 001 [[hep-ph/0108085](#)].
- [25] G.L. Fogli and E. Lisi, *Tests of three-flavor mixing in long-baseline neutrino oscillation experiments*, *Phys. Rev.* **D 54** (1996) 3667 [[hep-ph/9604415](#)].
- [26] V. Barger, D. Marfatia and K. Whisnant, *Breaking eight-fold degeneracies in neutrino CP-violation, mixing and mass hierarchy*, *Phys. Rev.* **D 65** (2002) 073023 [[hep-ph/0112119](#)].
- [27] H. Minakata and H. Nunokawa, *How to measure CP-violation in neutrino oscillation experiments?*, *Phys. Lett.* **B 413** (1997) 369 [[hep-ph/9706281](#)];
V. Barger, D. Marfatia and K. Whisnant, *Off-axis beams and detector clusters: resolving neutrino parameter degeneracies*, *Phys. Rev.* **D 66** (2002) 053007 [[hep-ph/0206038](#)]; *How two neutrino superbeam experiments do better than one*, *Phys. Lett.* **B 560** (2003) 75 [[hep-ph/0210428](#)];
O. Mena and S.J. Parke, *Untangling CP-violation and the mass hierarchy in long baseline experiments*, *Phys. Rev.* **D 70** (2004) 093011 [[hep-ph/0408070](#)];
O. Mena Requejo, S. Palomares-Ruiz and S. Pascoli, *Super-NOvA: A long-baseline neutrino experiment with two off-axis detectors*, *Phys. Rev.* **D 72** (2005) 053002 [[hep-ph/0504015](#)];
M. Ishitsuka, T. Kajita, H. Minakata and H. Nunokawa, *Resolving neutrino mass hierarchy and CP degeneracy by two identical detectors with different baselines*, *Phys. Rev.* **D 72** (2005) 033003 [[hep-ph/0504026](#)];
K. Hagiwara, N. Okamura and K.i. Senda, *Physics potential of T2KK: an extension of the T2K neutrino oscillation experiment with a far detector in Korea*, *Phys. Rev.* **D 76** (2007) 093002 [[hep-ph/0607255](#)].
- [28] P. Huber, M. Lindner and W. Winter, *Superbeams versus neutrino factories*, *Nucl. Phys.* **B 645** (2002) 3 [[hep-ph/0204352](#)]; *Synergies between the first-generation JHF-SK and NuMI superbeam experiments*, *Nucl. Phys.* **B 654** (2003) 3 [[hep-ph/0211300](#)].
- [29] A. Donini, D. Meloni and P. Migliozzi, *The silver channel at the neutrino factory*, *Nucl. Phys.* **B 646** (2002) 321 [[hep-ph/0206034](#)];
D. Autiero et al., *The synergy of the golden and silver channels at the neutrino factory*, *Eur. Phys. J.* **C 33** (2004) 243 [[hep-ph/0305185](#)].
- [30] A. Donini, E. Fernandez-Martinez and S. Rigolin, *Appearance and disappearance signals at a beta-beam and a super-beam facility*, *Phys. Lett.* **B 621** (2005) 276 [[hep-ph/0411402](#)];
A. Donini, E. Fernandez-Martinez, D. Meloni and S. Rigolin, *ν_μ disappearance at the SPL, T2K-I, NOvA and the neutrino factory*, *Nucl. Phys.* **B 743** (2006) 41 [[hep-ph/0512038](#)].
- [31] S.K. Agarwalla, S. Choubey, S. Goswami and A. Raychaudhuri, *Neutrino parameters from matter effects in P_{ee} at long baselines*, *Phys. Rev.* **D 75** (2007) 097302 [[hep-ph/0611233](#)].

- [32] P. Huber, M. Maltoni and T. Schwetz, *Resolving parameter degeneracies in long-baseline experiments by atmospheric neutrino data*, *Phys. Rev. D* **71** (2005) 053006 [[hep-ph/0501037](#)].
- [33] J.E. Campagne, M. Maltoni, M. Mezzetto and T. Schwetz, *Physics potential of the CERN-MEMPHYS neutrino oscillation project*, *JHEP* **04** (2007) 003 [[hep-ph/0603172](#)].
- [34] P. Huber, M. Lindner, T. Schwetz and W. Winter, *Reactor neutrino experiments compared to superbeams*, *Nucl. Phys. B* **665** (2003) 487 [[hep-ph/0303232](#)].
- [35] P. Huber and W. Winter, *Neutrino factories and the 'magic' baseline*, *Phys. Rev. D* **68** (2003) 037301 [[hep-ph/0301257](#)].
- [36] A.Y. Smirnov, *Neutrino oscillations: what is magic about the 'magic' baseline?*, [hep-ph/0610198](#).
- [37] M. Freund, M. Lindner, S.T. Petcov and A. Romanino, *Testing matter effects in very long baseline neutrino oscillation experiments*, *Nucl. Phys. B* **578** (2000) 27.
- [38] P. Huber, M. Lindner, M. Rolinec and W. Winter, *Optimization of a neutrino factory oscillation experiment*, *Phys. Rev. D* **74** (2006) 073003 [[hep-ph/0606119](#)].
- [39] S.K. Agarwalla, A. Raychaudhuri and A. Samanta, *Exploration prospects of a long baseline beta beam neutrino experiment with an iron calorimeter detector*, *Phys. Lett. B* **629** (2005) 33 [[hep-ph/0505015](#)].
- [40] S.K. Agarwalla, S. Choubey and A. Raychaudhuri, *Neutrino mass hierarchy and θ_{13} with a magic baseline beta-beam experiment*, *Nucl. Phys. B* **771** (2007) 1 [[hep-ph/0610333](#)].
- [41] S.K. Agarwalla, S. Choubey and A. Raychaudhuri, *Unraveling neutrino parameters with a magical beta-beam experiment at INO*, *Nucl. Phys. B* **798** (2008) 124 [[arXiv:0711.1459](#)].
- [42] M. Mezzetto, *Physics reach of the beta beam*, *J. Phys. G* **29** (2003) 1771 [[hep-ex/0302007](#)]; *Beta beams*, *Nucl. Phys.* **143** (Proc. Suppl.) (2005) 309 [[hep-ex/0410083](#)]; *Physics potential of the $\gamma = 100, 100$ beta beam*, *Nucl. Phys.* **155** (Proc. Suppl.) (2006) 214 [[hep-ex/0511005](#)].
- [43] A. Donini, E. Fernandez-Martinez, P. Migliozi, S. Rigolin and L. Scotto Lavina, *Study of the eightfold degeneracy with a standard beta- beam and a super-beam facility*, *Nucl. Phys. B* **710** (2005) 402 [[hep-ph/0406132](#)].
- [44] A. Donini et al., *Perspectives for a neutrino program based on the upgrades of the CERN accelerator complex*, [hep-ph/0511134](#); *A beta beam complex based on the machine upgrades of the LHC*, *Eur. Phys. J. C* **48** (2006) 787 [[hep-ph/0604229](#)].
- [45] P. Coloma, A. Donini, E. Fernandez-Martinez and J. Lopez-Pavon, *θ_{13} , δ and the neutrino mass hierarchy at a $\gamma = 350$ double baseline Li/B β -beam*, *JHEP* **05** (2008) 050 [[arXiv:0712.0796](#)].
- [46] J. Burguet-Castell, D. Casper, E. Couce, J.J. Gomez-Cadenas and P. Hernández, *Optimal beta-beam at the CERN-SPS*, *Nucl. Phys. B* **725** (2005) 306 [[hep-ph/0503021](#)].
- [47] J. Burguet-Castell, D. Casper, J.J. Gomez-Cadenas, P. Hernández and F. Sanchez, *Neutrino oscillation physics with a higher gamma beta-beam*, *Nucl. Phys. B* **695** (2004) 217 [[hep-ph/0312068](#)].
- [48] A. Jansson, O. Mena, S. Parke and N. Saoulidou, *Combining CPT-conjugate neutrino channels at Fermilab*, [arXiv:0711.1075](#).

- [49] P. Huber, M. Lindner, M. Rolinec and W. Winter, *Physics and optimization of beta-beams: from low to very high gamma*, *Phys. Rev. D* **73** (2006) 053002 [[hep-ph/0506237](#)].
- [50] C. Volpe, *Topical review on 'beta-beams'*, *J. Phys. G* **34** (2007) R1 [[hep-ph/0605033](#)].
- [51] A. Donini and E. Fernandez-Martinez, *Alternating ions in a beta-beam to solve degeneracies*, *Phys. Lett. B* **641** (2006) 432 [[hep-ph/0603261](#)].
- [52] R. Adhikari, S.K. Agarwalla and A. Raychaudhuri, *Can R-parity violating supersymmetry be seen in long baseline beta-beam experiments?*, *Phys. Lett. B* **642** (2006) 111 [[hep-ph/0608034](#)];
S.K. Agarwalla, S. Rakshit and A. Raychaudhuri, *Probing lepton number violating interactions with beta-beams*, *Phys. Lett. B* **647** (2007) 380 [[hep-ph/0609252](#)].
- [53] D. Meloni, O. Mena, C. Orme, S. Palomares-Ruiz and S. Pascoli, *An intermediate gamma beta-beam neutrino experiment with long baseline*, [arXiv:0802.0255](#).
- [54] C. Rubbia, A. Ferrari, Y. Kadi and V. Vlachoudis, *Beam cooling with ionisation losses*, *Nucl. Instrum. Meth. A* **568** (2006) 475 [[hep-ph/0602032](#)];
C. Rubbia, *Ionization cooled ultra pure beta-beams for long distance $\nu_e \rightarrow \nu_\mu$ transitions, θ_{13} phase and CP-violation*, [hep-ph/0609235](#).
- [55] Y. Mori, *Development of FFAG accelerators and their applications for intense secondary particle production*, *Nucl. Instrum. Meth. A* **562** (2006) 591.
- [56] INO collaboration, M.S. Athar et al., *India-based neutrino observatory: project report. Volume I*, INO-2006-01;
- [57] C. Volpe, *What about a beta beam facility for low energy neutrinos?*, *J. Phys. G* **30** (2004) L1 [[hep-ph/0303222](#)].
- [58] S. Choubey, *Physics with betabeams*, talk at *NuFact07*, <http://fphy.hep.okayama-u.ac.jp/nufact07/>, Okayama University, Okayama Japan (2007);
S.K. Agarwalla, S. Choubey and A. Raychaudhuri, *Physics with beta-beam*, *AIP Conf. Proc.* **981** (2008) 84 [[arXiv:0712.4072](#)].
- [59] B. Autin, R.C. Fernow, S. Machida and D.A. Harris, *NuFact02 machine working group summary*, *J. Phys. G* **29** (2003) 1637;
F. Terranova, A. Marotta, P. Migliozi and M. Spinetti, *High energy beta beams without massive detectors*, *Eur. Phys. J. C* **38** (2004) 69 [[hep-ph/0405081](#)].
- [60] L.P. Ekstrom and R.B. Firestone, *WWW table of radioactive isotopes*, database version 2/28/99 from URL <http://ie.lbl.gov/toi/>.
- [61] M. Lindroos, *Beta beams*, talk at the *First plenary meeting of the International Design Study for the Neutrino Factory*, <http://www.hep.ph.ic.ac.uk/ids/communication/RAL-2008-01-16/index.html>, RAL, U.K. (2008).
- [62] C.K. Jung, *Feasibility of a next generation underground water Cherenkov detector: UNO*, *AIP Conf. Proc.* **533** (2000) 29 [[hep-ex/0005046](#)].
- [63] THE T2K collaboration, Y. Itow et al., *The JHF-Kamioka neutrino project*, [hep-ex/0106019](#).
- [64] A. de Bellefon et al., *MEMPHYS: a large scale water Cerenkov detector at Frejus*, [hep-ex/0607026](#).

- [65] L. Wolfenstein, *Neutrino oscillations in matter*, *Phys. Rev. D* **17** (1978) 2369.
- [66] S.P. Mikheev and A.Y. Smirnov, *Resonance amplification of oscillations in matter and spectroscopy of solar neutrinos*, *Sov. J. Nucl. Phys.* **42** (1985) 913 [*Yad. Fiz.* **42** (1985) 1441]; *Resonant amplification of neutrino oscillations in matter and solar neutrino spectroscopy*, *Nuovo Cim.* **C9** (1986) 17.
- [67] V.D. Barger, K. Whisnant, S. Pakvasa and R.J.N. Phillips, *Matter effects on three-neutrino oscillations*, *Phys. Rev. D* **22** (1980) 2718.
- [68] M. Freund, P. Huber and M. Lindner, *Systematic exploration of the neutrino factory parameter space including errors and correlations*, *Nucl. Phys. B* **615** (2001) 331 [[hep-ph/0105071](#)].
- [69] A.M. Dziewonski and D.L. Anderson, *Preliminary reference earth model*, *Phys. Earth Planet. Interiors* **25** (1981) 297;
S.V. Panasyuk, *Reference earth model (REM) webpage*,
<http://mahi.ucsd.edu/Gabi/rem.html>.
- [70] A. Bandyopadhyay, S. Choubey, S. Goswami and S.T. Petcov, *High precision measurements of Theta(solar) in solar and reactor neutrino experiments*, *Phys. Rev. D* **72** (2005) 033013 [[hep-ph/0410283](#)];
J.N. Bahcall and C. Pena-Garay, *Global analyses as a road map to solar neutrino fluxes and oscillation parameters*, *JHEP* **11** (2003) 004.
- [71] R.J. Geller and T. Hara, *Geophysical aspects of very long baseline neutrino experiments*, *Nucl. Instrum. Meth.* **A503** (2001) 187 [[hep-ph/0111342](#)].
- [72] P. Huber, J. Kopp, M. Lindner, M. Rolinec and W. Winter, *New features in the simulation of neutrino oscillation experiments with GLOBES 3.0*, *Comput. Phys. Commun.* **177** (2007) 432 [[hep-ph/0701187](#)];
P. Huber, M. Lindner and W. Winter, *Simulation of long-baseline neutrino oscillation experiments with GLOBES*, *Comput. Phys. Commun.* **167** (2005) 195 [[hep-ph/0407333](#)].
- [73] M. Lindroos, *Introduction on machine issues*, talk at *Moriond Workshop on "Radioactive beams for nuclear physics and neutrino physics"*, <http://moriond.in2p3.fr/radio/index.html>, (2003).
- [74] S.K. Agarwalla, S. Choubey, P. Huber, A. Raychaudhuri and W. Winter, in preparation.